

OVERALL CHARACTERISTICS

120 through 277 VAC, 50/60 Hz universal input

20A lighting load rating

Normal and alternate power indicator lights

Test switch

Wall mount enclosure (9"x6"x3.5"d) contains all switching and control components

UL listed for field installation in indoor and damp locations, -4°F (-20°C) to 131°F (55°C)

UL 924 emergency lighting equipment

UL 1008 transfer switch equipment

C22.2 No. 178 automatic transfer switch

APPLICATION

Conference rooms

Classrooms

Auditoriums

Exterior egress

APTC20

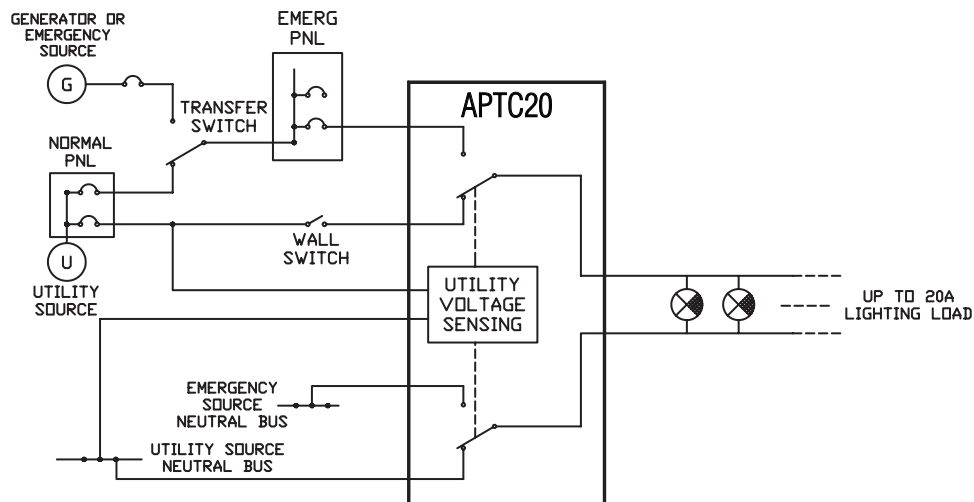
OPERATION

The APTC20 used with an emergency power source allows independent control of luminaires during normal power conditions by means of a wall switch, photocell, occupancy sensor, etc. Yet with the loss of normal power, the connected luminaires will be powered by the emergency source regardless of the pre-existing state of the normal power control device. Additionally, the APTC20 will isolate luminaires from a dimming panel allowing full illumination in the event of normal power loss and even includes an auxiliary dry contact for interface with dimming controls. Refer to APTC20 installation instructions for details of typical applications.

WARRANTY

The APTC20 is warranted for five (5) full years from date of purchase. This warranty covers only properly installed emergency lighting relay control devices used under normal conditions. For the warranty period, Chloride Systems will, at its option, repair or replace without charge a defective device, provided it is returned to the factory transportation prepaid and our inspection determines it to be defective under the terms of the warranty. Repair or replacement, as stated above, shall constitute the purchaser's exclusive warranty, which does not extend to transportation, installation, labor or any other charges; nor does it apply to any equipment of another manufacturer used in conjunction with the device.

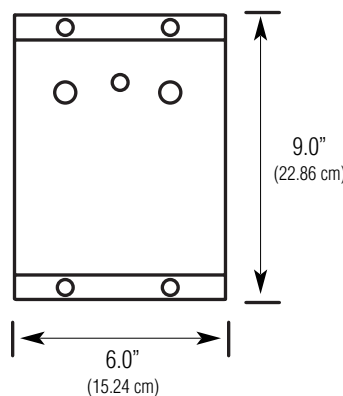
APPLICATION DIAGRAM



ORDERING INFORMATION



DIMENSIONS





CHLORIDE
SYSTEMS

272 West Stag Park Service Road • Burgaw, NC 28425
(910) 259-1000 • FAX (800) 258-8803
www.chloridesys.com

C1499
1/10 IH