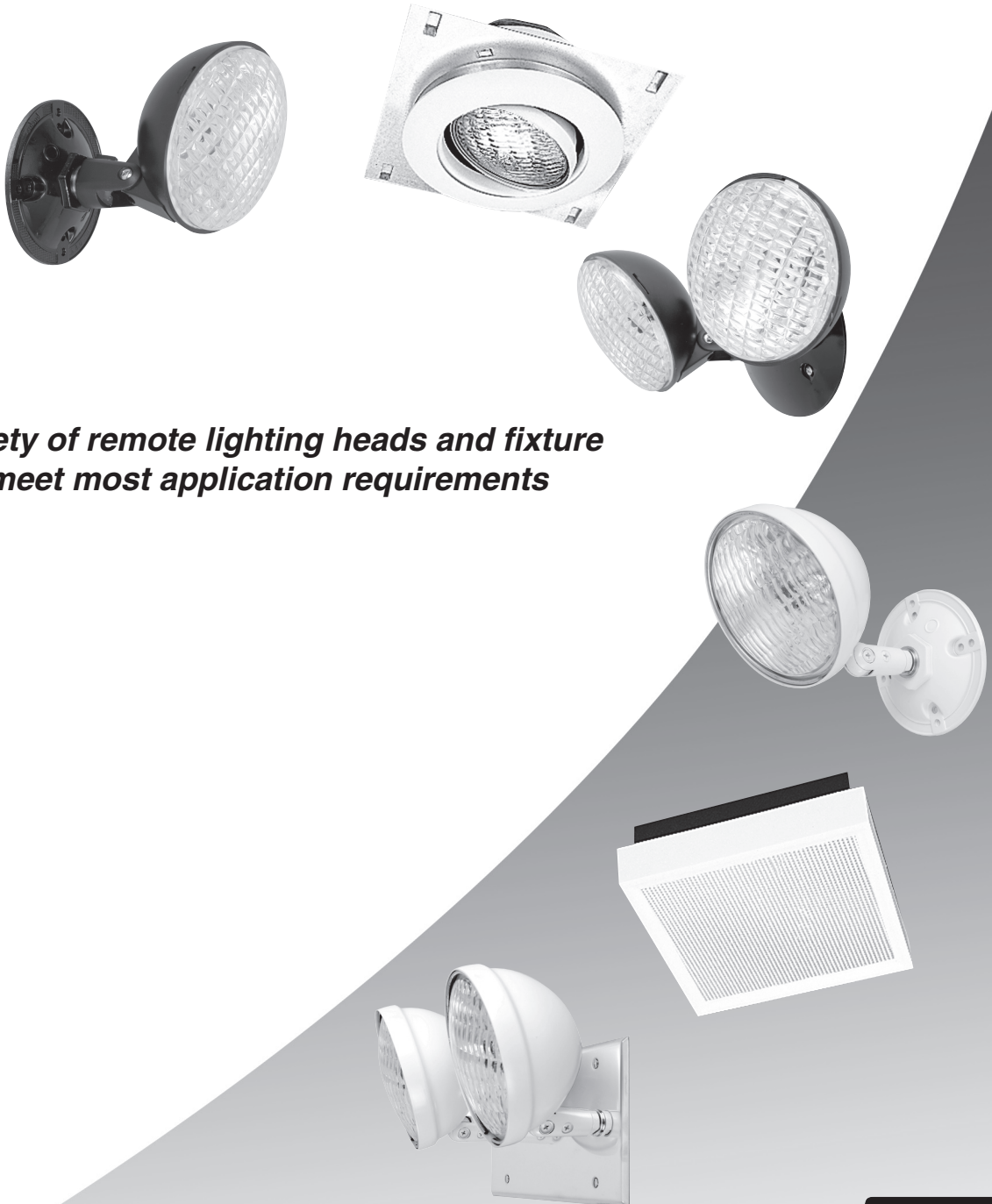




Emergency Lighting Fixtures

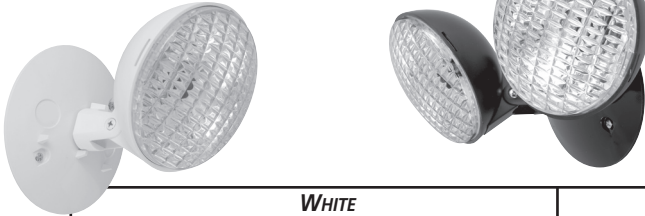


Wide variety of remote lighting heads and fixture styles to meet most application requirements



Hubbell Lighting, Inc.

Standard Remote Lighting Heads



SRH Series

Injection molded thermoplastic lamphead/round mounting plate assemblies. Mounts to 3 1/2" octagonal or single gang boxes. For use with most commercial or industrial emergency fixtures. Standard finish is available in white or black. Single and twin lamp fixtures with a choice of incandescent or halogen PAR 36 lamps.

Lamp photometrics and IES files available on the web at www.dual-lite.com

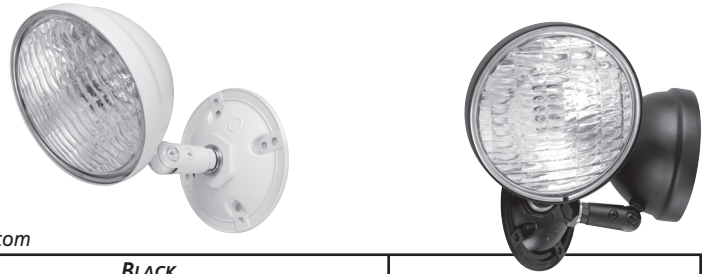
		WHITE		BLACK				
		SINGLE HEAD WITH MOUNTING PLATE	TWIN HEAD WITH MOUNTING PLATE	SINGLE HEAD WITH MOUNTING PLATE	TWIN HEAD WITH MOUNTING PLATE	LAMP VOLTAGE	LAMP WATTAGE	LAMP PART NO.
INCANDESCENT PAR 36 SEALED BEAM	SRHSW0605	SRHDW0605	SRHSB0605	SRHDB0605	6	5.4	0110258*	
	SRHSW0607	SRHDW0607	SRHSB0607	SRHDB0607	6	7.2	0110213*	
	SRHSW0618	SRHDW0618	SRHSB0618	SRHDB0618	6	18	0110127	
	SRHSW0625	SRHDW0625	SRHSB0625	SRHDB0625	6	25	0110041	
	SRHSW1207	SRHDW1207	SRHSB1207	SRHDB1207	12	7.2	0110289*	
	SRHSW1218	SRHDW1218	SRHSB1218	SRHDB1218	12	18	0110128	
	SRHSW1225	SRHDW1225	SRHSB1225	SRHDB1225	12	25	0110132	
	SRHSW1235	SRHDW1235	SRHSB1235	SRHDB1235	12	35	0110233	
SRHSW2409	SRHDW2409	SRHSB2409	SRHDB2409	24	9	0110230*		
HALOGEN PAR 36 SEALED BEAM	SRHSW0608	SRHDW0608	SRHSB0608	SRHDB0608	6	8	0110162	
	SRHSW0612	SRHDW0612	SRHSB0612	SRHDB0612	6	12	0110159	
	SRHSW0620	SRHDW0620	SRHSB0620	SRHDB0620	6	20	0110157	
	SRHSW1208	SRHDW1208	SRHSB1208	SRHDB1208	12	8	0110189	
	SRHSW1212	SRHDW1212	SRHSB1212	SRHDB1212	12	12	0110190	

* Sealed Beam type lamp

Outdoor Remote Lighting Heads

OMS Series

Outdoor aluminum spot with sealed lamp and swivel assembly. Furnished with round gasketed aluminum mounting plate. Mounts to 3 1/2" octagonal boxes.



Lamp photometrics and IES files available on the web at www.dual-lite.com

		WHITE		BLACK				
		SINGLE HEAD WITH MOUNTING PLATE	TWIN HEAD WITH MOUNTING PLATE	SINGLE HEAD WITH MOUNTING PLATE	TWIN HEAD WITH MOUNTING PLATE	LAMP VOLTAGE	LAMP WATTAGE	LAMP PART NO.
INCANDESCENT PAR 36 SEALED BEAM	OMSSW0605	OMSDW0605	OMSSB0605	OMSDB0605	6	5.4	0110258*	
	OMSSW0607	OMSDW0607	OMSSB0607	OMSDB0607	6	7.2	0110213*	
	OMSSW0618	OMSDW0618	OMSSB0618	OMSDB0618	6	18	0110127	
	OMSSW0625	OMSDW0625	OMSSB0625	OMSDB0625	6	25	0110041	
	OMSSW1207	OMSDW1207	OMSSB1207	OMSDB1207	12	7.2	0110289*	
	OMSSW1218	OMSDW1218	OMSSB1218	OMSDB1218	12	18	0110128	
	OMSSW1225	OMSDW1225	OMSSB1225	OMSDB1225	12	25	0110132	
	OMSSW1235	OMSDW1235	OMSSB1235	OMSDB1235	12	35	0110233	
HALOGEN PAR 36 SEALED BEAM	OMSSW0608	OMSDW0608	OMSSB0608	OMSDB0608	6	8	0110162	
	OMSSW0612	OMSDW0612	OMSSB0612	OMSDB0612	6	12	0110159	
	OMSSW0620	OMSDW0620	OMSSB0620	OMSDB0620	6	20	0110157	
	OMSSW1208	OMSDW1208	OMSSB1208	OMSDB1208	12	8	0110189	
	OMSSW1212	OMSDW1212	OMSSB1212	OMSDB1212	12	12	0110190	

* Sealed Beam type lamp

All Metal Remote Lighting Heads

AHD

Stamped aluminum housing with metal swivel. Standard finish available in white or black. Choice of incandescent or halogen PAR 36 lamps.



Lamp photometrics and IES files available on the web at www.dual-lite.com

	WHITE		BLACK		LAMP VOLTAGE	LAMP WATTAGE	LAMP PART NO.
	SINGLE HEAD WITH MOUNTING PLATE	TWIN HEAD WITH MOUNTING PLATE	SINGLE HEAD WITH MOUNTING PLATE	TWIN HEAD WITH MOUNTING PLATE			
INCANDESCENT PAR 36 SEALED BEAM	AHDSW0605	AHDDW0605	AHDSB0605	AHDDB0605	6	5.4	0110258*
	AHDSW0607	AHDDW0607	AHDSB0607	AHDDB0607	6	7.2	0110213*
	AHDSW0618	AHDDW0618	AHDSB0618	AHDDB0618	6	18	0110127
	AHDSW0625	AHDDW0625	AHDSB0625	AHDDB0625	6	25	0110041
	AHDSW1207	AHDDW1207	AHDSB1207	AHDDB1207	12	7.2	0110289*
	AHDSW1218	AHDDW1218	AHDSB1218	AHDDB1218	12	18	0110128
	AHDSW1225	AHDDW1225	AHDSB1225	AHDDB1225	12	25	0110132
	AHDSW1235	AHDDW1235	AHDSB1235	AHDDB1235	12	35	0110233
	AHDSW2409	AHDDW2409	AHDSB2409	AHDDB2409	24	9	0110212*
	AHDSW2413	AHDDW2413	AHDSB2413	AHDDB2413	24	13	0110009*
	AHDSW2418	AHDDW2418	AHDSB2418	AHDDB2418	24	18	0110010*
	AHDSW2428	AHDDW2428	AHDSB2428	AHDDB2428	24	28	0110011*
	AHDSWL30	AHDDWL30	AHDSBL30	AHDDBL30	120	30	0110021*
HALOGEN PAR 36 SEALED BEAM	AHDSW0608	AHDDW0608	AHDSB0608	AHDDB0608	6	8	0110162
	AHDSW0612 (1)	AHDDW0612 (1)	AHDSB0612	AHDDB0612	6	12	0110159
	AHDSW0620	AHDDW0620	AHDSB0620	AHDDB0620	6	20	0110157
	AHDSW1208	AHDDW1208	AHDSB1208	AHDDB1208	12	8	0110189
	AHDSW1212 (1)	AHDDW1212 (1)	AHDSB1212	AHDDB1212	12	12	0110190

* Sealed Beam type lamp

(1) Matches LM City of Chicago models.

Environmental Lighting Head



GNX Series

Moisture resistant thermoplastic head in black finish with coated lamp terminals and sealed swivel assembly. Furnished with mounting plate. Available with a choice of incandescent or halogen PAR 36 lamps. Matches N4X series units.

Available with shatter containment option. Add "-L" to model number for Sealed Beam Lamps PAR36 only. Example: **GNXSB0625-L**

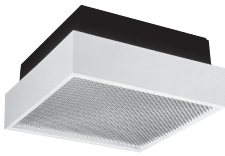


Lamp photometrics and IES files available on the web at www.dual-lite.com

	N4X REMOTE HEAD MODELS		LAMP VOLTS	LAMP WATTS	LAMP PART NO.
	SINGLE	TWIN			
INCANDESCENT PAR 36 SEALED BEAM	GNXSB0607	GNXDB0607	6	7.2	0110213*
	GNXSB0618	GNXDB0618	6	18	0110127
	GNXSB0625	GNXDB0625	6	25	0110041
	GNXSB1209	GNXDB1209	12	9	0110202*
	GNXSB1218	GNXDB1218	12	18	0110128
	GNXSB1225	GNXDB1225	12	25	0110132
	GNXSB1235	GNXDB1235	12	35	0110233
HALOGEN PAR 36 SEALED BEAM	GNXSB0608	GNXDB0608	6	8	0110162
	GNXSB0612	GNXDB0612	6	12	0110159
	GNXSB0620	GNXDB0620	6	20	0110157
	GNXSB1208	GNXDB1208	12	8	0110189
	GNXSB1212	GNXDB1212	12	12	0110190

* Sealed Beam Type lamp. Shatter containment option (-L) not available with this lamp.

Square



RERS

Injection molded housing. Surface mounted. Semi-recessed or recessed mounting available with kit. Black box, white trim. Single (RERS-1) and twin (RERS-2) lamp models. Dimensions and mounting kits same as **Lite**².

Catalog No.	Lamp Part No.
RERS-1-0609	0110163
RERS-2-0607	0110213
F-SRM	Semi-recessed mounting kit
-FRM	Fully-recessed option

Recessed Rectangle



124R

Recessed mounted fixture with frosted lens. White trim. Dimensions: 8³/₁₆" x 4¹/₂" x 4".

Catalog No.	Lamp Part No.
124R-0628	0110003
124R-1228	0110007

Gimbal



122

Adjustable (60° max.) recessed mounted fixture. Matte white trim. Dimensions: 8¹/₂" dia. x 4¹/₂".

Incandescent PAR 36 Lamp Models	
Catalog No.	Lamp Part no.
122SB-0625	0110041
122SB-1225	0110132
Halogen PAR 36 Lamp Models	
Catalog No	Lamp Part No.
122SB-T-0608	0110162
122SB-T-0612	0110159
122SB-T-0620	0110157
122SB-T-1208	0110189
122SB-T-1212	0110190
Bayonet Base Lamp Models	
Catalog No.	Lamp Part No.
122-2407	0110212
122-2413	0110009
122-2418	0110010
122-2428	0110011

Recessed Eyeball



133

Adjustable to 42° and rotated through 358°. White standard, other finishes upon request. Dimensions: Trim ring: 4⁷/₈" dia. Back box: 4³/₁₆" deep x 4" dia.

Catalog No.	Lamp Part No.
133-0618	0110002
133-1218	0110006

LZ Series Matching Remote Lighting Heads

LZR

Architectural/commercial design. High performance MR-16 halogen lamps standard. Mounts to standard electrical boxes using universal mounting plate provided. Fixture housing mounts to back plate in a choice of four mounting positions. Housings secured using locking screws provided.



SINGLE REMOTE HEAD - WHITE	SINGLE REMOTE HEAD - BLACK	LAMP VOLTS	LAMP WATTS	LAMP PART NO.
LZRSW0605	LZRSB0605	6	5	0110256
LZRSW0610	LZRSB0610	6	10	0110261
LZRSW1205	LZRSB1205	12	5	0110263
LZRSW1210	LZRSB1210	12	10	0110264

TWIN REMOTE HEAD - WHITE	TWIN REMOTE HEAD - BLACK	LAMP VOLTS	LAMP WATTS	LAMP PART NO.
LZRDW0605	LZRDB0605	6	5	0110256
LZRDW0610	LZRDB0610	6	10	0110261
LZRDW1205	LZRDB1205	12	5	0110263
LZRDW1210	LZRDB1210	12	10	0110264

Lamp photometrics and IES files available on the web at www.dual-lite.com

IPS Series Matching Remote Lighting Heads

C1D2R/C1D2TR

Suitable for wet and damp location applications. Rated for NEC Class I, Division 2, Groups B, C and D as well as Class I, Zone 2, Group IIB + H₂ environments. Black housing and head assemblies. Single (C1D2R) and twin (C1D2TR) head models.



3R Listed

LAMPS *		MODEL NUMBERS	
		SINGLE HEAD	TWIN HEAD
VOLTS	WATTS	HUB LEFT SIDE ⁽¹⁾⁽²⁾	HUB LEFT SIDE ⁽¹⁾⁽²⁾
6	8	C1D2R-6V8W	C1D2TR-6V8W
6	12	C1D2R-6V12W	C1D2TR-6V12W
12	8	C1D2R-12V8W	C1D2TR-12V8W
12	12	C1D2R-12V12W	C1D2TR-12V12W

* PAR 36 Halogen sealed beam lamps.

(1) Hub Right Side - add "R" to end of model number. Example C1D2R-6V8WR.

(2) Hubs Both Sides - add "F" to end of model number. Example C1D2R-6V8WF.

Consult factory for additional voltage and wattage configurations for remote fixtures.