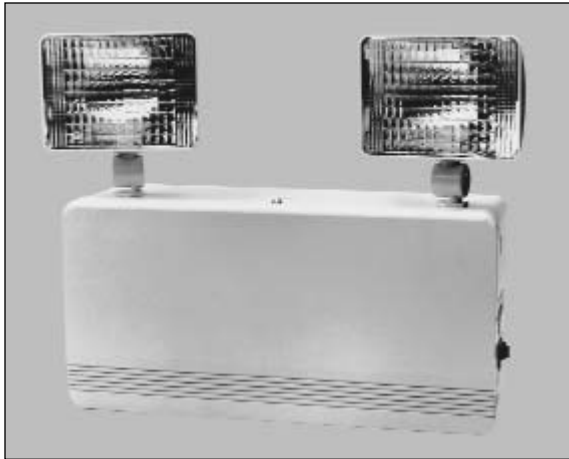


Type No. _____
 Job Name _____
 Catalog No. _____



Vectra Series



Shown: VP618WJ962



- **6 Volt, 14 - 50 Watts**
12 Volt, 25 - 50 Watts
- **Maintenance Free, Sealed Lead Calcium or Nickel Cadmium Batteries**
- **General Duty Emergency Product w/ Thermoplastic Housing**

Housing

- UL 94 V-0, 5 VA impact resistant, white thermoplastic
- Universal J-box mounting pattern, keyhole slots or shelf mounting
- Available with a wide range of fully adjustable PAR 36 sealed beam tungsten or halogen; wedge base tungsten or halogen lamp heads
- Low profile push-to-test switch

Electronics

- 120/277 VAC dual voltage input capability
- Lead calcium units utilize a solid-state, fully automatic, voltage regulated charger
- Nickel cadmium units utilize a solid-state, constant current charger
- Brownout protection activates lights when AC voltage drops 20% below nominal
- Labor saving AC lockout feature
- Low voltage disconnect switch (LVD) prevents deep battery discharge

Electrical Specifications

120 VAC - 0.18 amps, 20 watts
 277 VAC - 0.08 amps, 20 watts

Application

- Commercial locations where a decorative, highly reliable emergency lighting unit is desired

Warranty

Electronics: 3 years
 Battery: 1 year full, 4 years pro-rata (lead calcium)
 5 years full, 5 years pro-rata (nickel cadmium)

Battery

- Choice of maintenance free, sealed lead calcium or maintenance free, sealed nickel cadmium batteries
- Lead calcium battery has an expected service life of 5 years with an operating range of 65°F (19°C) to 85°F (30°C)*
- Nickel cadmium battery has an expected service life of 10 years with an operating range of 20°F (-7°C) to 95°F (35°C)*
- Nickel cadmium batteries are ideal for high ambient temperature areas

* Increases or decreases in temperature will affect battery performance and/or capacity. Optimum battery performance realized at 77°F (25°C).

Self-Diagnostics (Optional)

- OmniTest Self-Diagnostics includes automatic and manual tests to ensure unit is operating properly, and assists user in meeting code requirements
- Verifies battery voltage and lamp continuity every 10 seconds
- Illuminates lamps and discharges battery for 3 minutes every 30 days. A manual test is available from 1 to 90 minutes.

Code Compliance

- UL 924 listed
- UL 924 damp location listing on lead calcium models only
- NFPA 101, NEC, BOCA, OSHA, and IBC illumination standards

Operation

DC Voltage	Unit	Suggested Lamp Head	Watts to 87½ of Rated Voltage*			
			1½ hrs.	2 hrs.	4 hrs.	8 hrs.
6	VP618W	J96	18.0	13.5	7.0	—
	VP625W	J96	25.0	19.0	9.5	—
	VP636W	J96	36.0	27.0	14.0	7.2
	VP650W	J96	50.0	37.5	19.0	10.0
	VP6N14W	J96	14.0	10.5	5.5	—
	VP6N18W	J96	18.0	13.5	7.0	—
	VP6N25W	J96	25.0	19.0	9.5	—
	VP6N50W	J96	50.0	37.5	19.0	10.0
12	VP1236W	J912	36.0	27.0	14.0	7.2
	VP1250W	J912	50.0	37.5	19.0	10.0
	VP12N25W	J912	25.0	19.0	9.5	—
	VP12N50W	J912	50.0	37.5	19.0	10.0

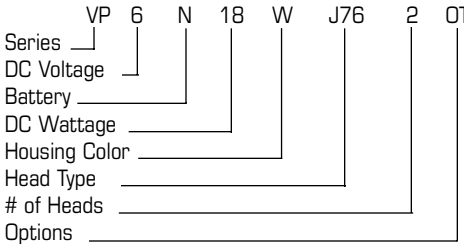
* Per NEC Specifications

Ordering Information

VP				W				
SERIES	DC VOLTAGE	BATTERY	DC WATTAGE	HOUSING COLOR	HEAD TYPE	# OF HEADS	OPTIONS ¹	ACCESSORIES (Ordered Separately)
VP = Vectra Series, Thermoplastic	6 = 6 Volt 12 = 12 Volt	Blank = Lead Calcium N = Nickel Cadmium	Lead Calcium: 6 Volt 18 = 18 watt 25 = 25 watt 36 = 36 watt 50 = 50 watt 12 Volt 36 = 36 watt 50 = 50 watt Nickel Cadmium: 6 Volt 14 = 14 watt 18 = 18 watt 25 = 25 watt 50 = 50 watt 12 Volt 25 = 25 watt 50 = 50 watt	W = White	Please refer to Lamp Head Selection Chart below.	2 = Two 1 = One Blank = No Heads	A = Ammeter ² ACF1 = 120 VAC Fuse ACF2 = 277 VAC Fuse ACP1 = 120 VAC Power Switch ACP2 = 277 VAC Power Switch DCP = DC Power Switch EX = Special Input Transformer ¹ (Specify voltage & frequency) I = Factory Installed Lamp Heads OT = OmniTest Self-Diagnostics OTAL = OmniTest w/ Alarm OTTD = OmniTest w/ Time Delay ³ TD1 = 120 VAC Time Delay ² TD2 = 277 VAC Time Delay ² V = Voltmeter ² DL = Damp Location ⁴	PVS = Polycarbonate Vandal Shield WGS = Wire Guard MSSHELFW = White Mounting Shelf

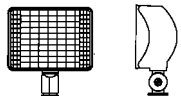
NOTES:
 1) Some option combinations may impact UL listing. Consult factory for specifics
 2) Not available with OT, OTAL or OTTD options.
 3) 15 minute delay.
 4) Available on VP618, VP625, VP636, VP650 and VP1250 only.

Ordering Example



Lamp Head Selection

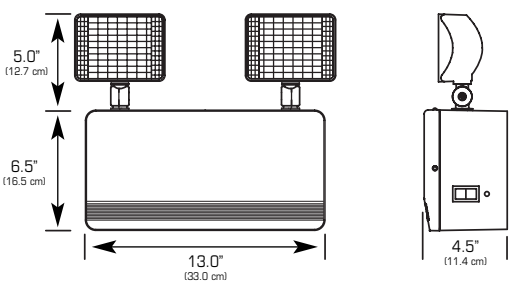
LightGuard's "J" head is the suggested head for the Vectra Thermoplastic Series. The wedge base head is constructed of high impact thermoplastic and is available in white to match the housing color. For additional lamp heads, please refer to the Accessories section of the LightGuard Specification Binder.



"J" Head
 Thermoplastic Wedge Base Rectangular Head

Type	Wattage	Order Code
6 Volt Tungsten	5.4	White
	7.2	J66
	9.0	J76 J96
12 Volt Tungsten	9.0	J912
	12.5	J1212
	18.0	J1812

Dimensions



Dimensions are approximate and subject to change.

Suggested Specification

Furnish and install LightGuard's Vectra Series model _____. Upon failure or brownout of utility power, the units shall automatically transfer to battery power and maintain the required illumination for a period of 90 minutes. Upon restoration of utility power, the charger shall restore the battery to full charge per UL 924 standard requirements.

CHARGER - Sealed lead calcium battery units shall be equipped with a solid-state, voltage regulated charger. Nickel cadmium units shall be equipped with a solid-state constant current charger.

BATTERY - The battery shall be maintenance free, sealed lead calcium or maintenance free, sealed nickel cadmium.

HOUSING - The housing shall be UL 94 V-0, 5 VA high impact white thermoplastic.

SELF-DIAGNOSTICS (optional) - The unit shall include OmniTest self-diagnostics. OmniTest shall conduct the following automatic tests: battery voltage and lamp continuity every 10 seconds, a 3 minute battery discharge and lamp illumination test every 30 days, and a 30 minute battery discharge and lamp illumination test every 6 months. OmniTest shall also conduct the following manual tests: three minute, 30 minute and 90 minute battery discharge and lamp illumination tests and optional audible alarm test.

ALL SPECIFICATIONS SUBJECT TO CHANGE WITHOUT NOTICE



272 West Stag Park Service Road • Burgaw, NC 28425
 (910) 259-1131 • FAX (800) 403-6927
 www.lightguard.com

L2057R14
 5/09 IH