

PRO-2, DLM-2 and Revelation Series



PRO-2 Remote Series

Standard Features

The Provider Series is the new look in emergency lighting design. Its sleek low profile thermoplastic body and transparent polycarbonate lamp shield combine to make a contemporary style that's just right for today's aesthetic demands. Finished in off-white, the provider will compliment a variety of interiors in stores, offices, theaters, restaurants and shopping malls. Provider is versatile too, its body, measuring only 11" X 5" can be mounted in any orientation on wall or ceiling.

How To Order

	Model
6 volt 10.8 total unit wattage	6PRO-10
12 volt 18 total unit wattage	12PRO-2(ZF)
24 volt 18 total unit wattage	24PRO-2(ZN)



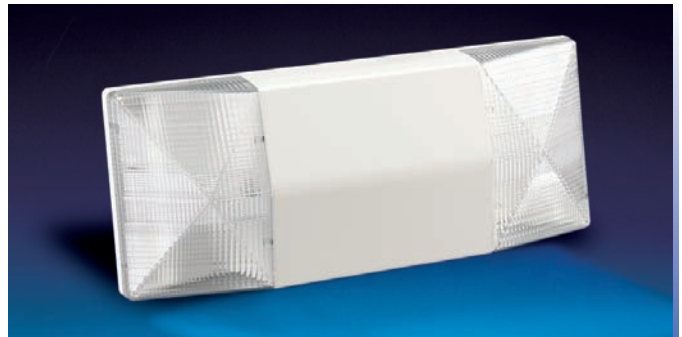
DLM-2 Remote Series

Standard Features

Two flush mounted fresnel lenses add a contemporary, elegant style to the DLM-2. Constructed of thermoplastic, its compact design measures 11 1/2 inches by 12 3/8 inches. The DLM-2 Series has a light textured off-white finish and is compact in design which blends well with a variety of architectural surfaces. No screws or other mounting hardware is visible. It can be mounted in any orientation on walls or ceilings.

How To Order

	Model
2 lamps 6V 5.4W	6DLM-10
2 lamps 6V 7.2W	6DLM-14



Standard Features

The Revelation Series is architecturally designed for unobtrusive use in walls with cavity (dry-walls with 4-inch studs) or un-insulated ceilings with horizontal beams or T-bar structures. In normal conditions (stand-by) the unit is completely concealed in the wall or ceiling. In case of power failure the door of the unit rotates open 180° and exposes the emergency lights (two high-efficiency MR16 lamps) to illuminate the path of egress. Once AC power returns or at the end of discharge period, the lights turn off and the door rotates closed automatically, driven by a patent-pending, energy storage circuit. The fixture does not require any back box for pre-installation. For remote AC generator applications please consult factory.



Revelation Remote Series

How To Order

(REQUIRES EXTERNAL AC AND DC SOURCE)

12 volt with (2) 12 watt lamps	12RTR2-12
24 volt with (2) 12 watt lamps	24RTR2-12
12 volt with (2) 20 watt lamps	12RTR2-20
24 volt with (2) 20 watt lamps	24RTR2-20
12 volt with (2) 35 watt lamps	12RTR2-35
24 volt with (2) 35 watt lamps	24RTR2-35
12 volt with (2) 50 watt lamps	12RTR2-50
24 volt with (2) 50 watt lamps	24RTR2-50
12 volt with (2) 20 watt lamps, High Lumen Output	12RTR2-20H
12 volt with (2) 35 watt lamps, High Lumen Output	12RTR2-35H
12 volt with (2) 50 watt lamps, High Lumen Output	12RTR2-50H

Option

Damp Location DL

