

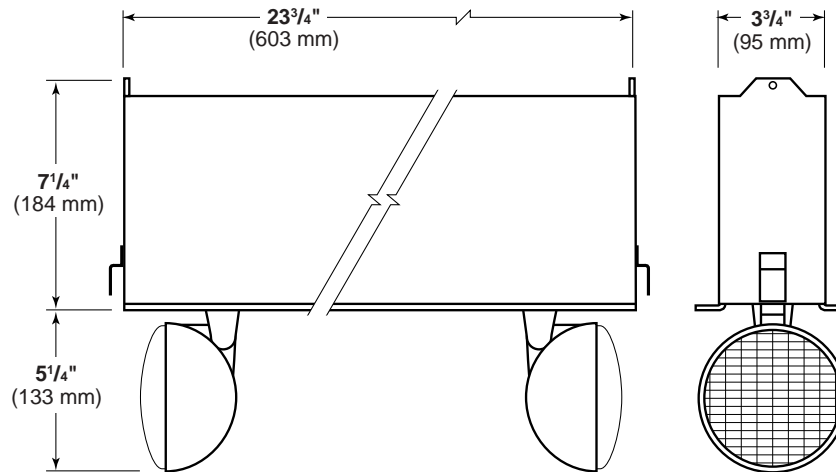
Presc•lite

Life Safety Products

ERT Series

15W, 30W and 50W Emergency Lighting Unit

Type: _____



Easy to install and unobtrusive, the ERT series is the ultimate recessed unit. Designed for use exclusively in T-Bar grid ceilings, the ERT series blends in with the ceiling tile to make it appropriate for commercial applications.



Standard Features

- Maintenance-free, lead-acid battery
- Dual voltage – 120/277VAC
- Automatic low voltage disconnect
- Heavy 20 gauge steel housing construction
- Standard white housing
- Optional **CVS** self-testing electronics
- Thermally compensated charger
- Regulated charge voltage
- Reverse polarity protection
- Filtered charger output
- Easy to install T-Bar lay-in design
- Short circuit protection
- Brownout protection
- AC lockout
- Test switch AC-On light
- Housing can accommodate up to three lampheads
- Standard with two T-5 incandescent lamps
- Temperature range: 20°C to 30°C (68°F to 86°F)
- UL924 Listed

Model Numbers

Standard Battery Models

ERT2 (6V, 15W)

ERT4 (6V, 30W)

ERT5 (12V, 50W)

NiCad Battery Models

ERT2N (6V, 15W)

ERT4N (6V, 30W)

ERT5N (12V, 50W)

Options (Add suffix to catalog number)

CVS Continuous Verification System⁽¹⁾⁽⁴⁾

-EV1 Voltmeter

-T Halogen lamp option⁽²⁾

-3 Unit supplied with 3 lampheads⁽³⁾

-0 Unit supplied with no lampheads⁽³⁾

(1) Add "CVS" self-test option suffix immediately after base model number.
Example: ERT4CVS

(2) Specify voltage and wattage when ordering.

(3) Not available on ERT2 and ERT2N models.

(4) CVS not available with NiCad battery models

Accessories (Order Separately)

PELH Matching remote head - single⁽⁶⁾

PELHD Matching remote head - twin⁽⁶⁾

(6) Supplied with mounting plate.

Specify voltage and wattage when ordering.

Example: PELHD0612

See Remote Fixtures data sheet 0601888.



Hubbell Lighting, Inc.

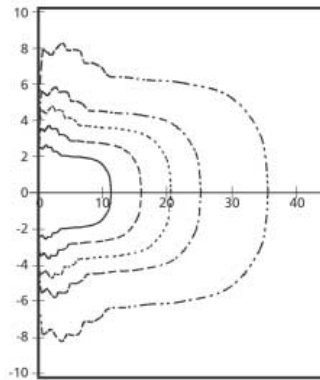
Housing

Housing and faceplate are constructed of heavy 20 gauge steel. Knockouts are provided for up to three heads. Standard unit is white. Easy to install T-bar lay-in design. Housing can be wired in with T-bar panels. Knockout in faceplate provided for ammeter or voltmeter. Conduit knockouts provided on both the top and side.

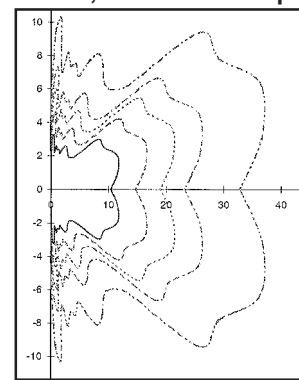
Light Source

The ERT4 is furnished standard with two 6 volt, 7.2 watt T-5 lamps and the ERT5 is furnished standard with two 12 volt, 9.0 watt T-5 lamps. Fully directional, injection molded lampheads will remain in place once they are aimed in desired direction.

6 Volt, 7.2 Watt T-5 Lamp



12 Volt, 9 Watt T-5 Lamp



Optional Lamps

To order non-standard lamps, suffix catalog number.

Example: ERT4-T0612

Battery

A maintenance free lead-acid battery is provided. The battery is completely sealed and it is never necessary to add water.

Electronics

A solid-state charger is standard. Charger voltage is regulated to $\pm 1\%$ of nominal system voltage. The charger is current limited and protected against short circuit and reverse polarity conditions. Transfer to emergency operation is completely automatic upon failure of utility AC voltage. A low voltage disconnect circuit prevents deep discharge damage to the unit battery during prolonged power outages. An AC lock-out prevents battery discharge before the unit is energized with AC power. Full battery recharge occurs in compliance with UL 924 specifications. A universal 120/277VAC, 60Hz input transformer, test switch and long life AC pilot light are all provided standard.

Limited Warranty

Description	Warranty In Years		
	Unit Full	Battery	
		Full	Pro-Rata
ERT Series	3	1	5
with NiCad battery option	3	1	9
with CVS option	5	2	4

Batteries must be placed in service or recharged within nine (9) months from factory shipment date. This warranty only applies when the product is used as intended. Any abuse or misuse contrary to normal installation or operation shall void this warranty.

Suggested Specifications

Self contained emergency lighting unit shall be Prescolite Life Safety Products model (ERT4)(ERT5). The unit shall supply the rated load for a minimum of 1½ hours to not less than 87½% of rated battery voltage. The unit shall be rated 120/277VAC, 60 Hz and be listed with Underwriters Laboratories to Standard 924. The emergency power source shall be a fully rechargeable maintenance free lead-acid battery. The housing shall be constructed of heavy 20 gauge steel. Electronics shall include a solid state charger with regulated charge voltage, current limitation, temperature compensation and short circuit protection. AC pilot light and manual test switch are standard. A low voltage disconnect and AC lock-out will also be included in the electronics. Illumination shall be provided by two (6 volt, 7.2W)(12 volt, 9W) sealed beam type wedge base T-5 incandescent lamps housed in fully directional, high impact thermoplastic lamphead assemblies.

Product Selector Guide

Standard Models	NiCad Battery Models	Electrical									
		Output Volts	Output Watts				AC Input*			Standard Lamp	Remote Capability
		1.5 Hours	2 Hours	3 Hours	4 Hours	Volts	Amps	Watts			
ERT2	ERT2N	6	15	11	8	6	120	.064 (.070)	7.0 (7.6)	7.2W	No
							277	.029 (.032)	7.4 (8.0)		
ERT4	ERT4N	6	30	22	15	12	120	.064 (.114)	7.0 (12.3)	7.2W	Yes
							277	.029 (.051)	7.4 (12.7)		
ERT5	ERT5N	12	50	38	25	20	120	.120 (.250)	12.6 (27.0)	9.0W	Yes
							277	.051 (.108)	12.9 (26.9)		

* AC Input figures in parenthesis are for NiCad battery models.