

Type No. _____
Job Name _____
Catalog No. _____



Listed
to 924

Shown: GPREM

GPREM

Recessed Par 36 Adjustable Gimbal Emergency Unit

➤ **6 Volt, 8 Watt**

➤ **Maintenance Free, Sealed
Lead Calcium Battery**

Housing

- Aluminum housing and gimbal assembly with a compact, low profile design
- Trim ring and gimbal assembly are standard with a matte white finish
- Easy recessed installation in sheetrock or mechanical ceilings

Battery

- Maintenance free, sealed lead calcium battery has an expected service life of 5 years with an operating range of 65°F (19°C) to 85°F (30°C)*

* Increases or decreases in temperature will affect battery performance and/or capacity. Optimum battery performance realized at 77°F (25°C).

Application

- Commercial locations where an adjustable recessed emergency lighting unit is desired

Warranty

Electronics: 1 year

Battery: 1 year full, 4 years pro-rata

Code Compliance

- UL 924 listed
- NFPA 101
- NEC, BOCA and OSHA illumination standard

Electronics

- 120/277 VAC dual voltage input capability
- Environmentally coated, fully automatic solid-state charger restores battery to full charge within UL 924 specifications
- Brownout protection activates lights when AC voltage drops 20% below nominal
- Low voltage disconnect prevents deep battery discharge
- Labor saving AC lockout feature
- All electronics are completely self-contained
- Charge rate pilot light and test switch

Power Consumption

120 VAC - 0.07 amps, 8.4 watts

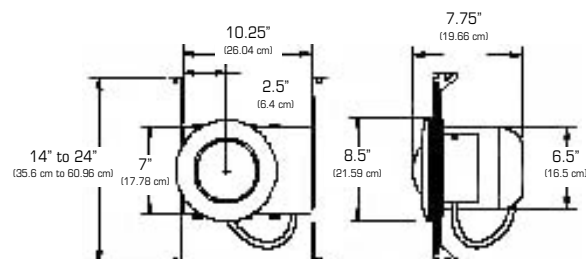
277 VAC - 0.04 amps, 8.8 watts

Emergency Operation - 10.0 watts output capability

Ordering Information

GPREM = Recessed Gimbal Halogen Fixture

Dimensions





Listed
to 924

GPR

6 and 12 Volt Remote Gimbal Fixtures

Shown: GPR86

Features

- 6 and 12 volt operation
- Aluminum housing and gimbal assembly
- Utilizes Par 36 sealed beam tungsten and halogen lamps
- Fully recessed design
- Installation in mechanical and sheetrock ceilings

Accessories

(Ordered separately)

SC = Bar hanger kit for mechanical ceilings

Ordering Information

Voltage	Wattage	Tungsten	Halogen
6 volt	8	GPR86	
	18	GPR186	
	25	GPR256	
12 volt	8		GPR812
	18	GPR1812	
	25	GPR2512	



ALL SPECIFICATIONS SUBJECT TO CHANGE WITHOUT NOTICE

L2106R1
3/01 IH