

FEATURES & SPECIFICATIONS

INTENDED USE — Our recessed LED module is the most economical means to create a well lit environment with exceptional energy efficiency and near zero maintenance. Great for retrofit into existing downlight cans or new construction and remodel applications. Unique torsion spring and friction clip retention allows fitment into nearly 100% of installed cans. The LED module maintains at least 70% light output for 50,000 hours.

CONSTRUCTION — Aluminum die cast reflector with deep baffle configuration for reduced glare. Combined LED and driver printed circuit board attached. Inner reflector cone funnels light through the pressed-in diffused lens.

Baffle and open trim inserts are available in multiple finishes.

OPTICS — Diffused lens at end of mixing chamber to provide even light distribution for general illumination, equivalent to 65W BR30 or 100W BR30 lamp.

Wide flood beam angle at >45°.

ELECTRICAL — Center 2 Edge™ (patent pending) technology created for a single point source. Primary power disconnect provided for simple connection to a dedicated LED connector in the housing.

Dimming down to 10%. For compatible dimmers, refer to [Compatible Dimmers Chart](#).

725-lumen P series has an input wattage of 12.7 watts, 57 lumens per watt, equivalent to 65-watt incandescent.

P Series' patent pending driver has zero inrush, which allows power loads to be calculated with actual rated wattages.

Example: 47 units of 6BPMW LED fixtures can be installed in line with a 600-watt dimmer. 600W/12.7W = 47 fixtures.

950-lumen P series has an input wattage of 15.2 watts, 63 lumens per watt, equivalent to 100-watt incandescent.

INSTALLATION — Suitable for installation in standard and shallow-height rough-in sections.

E26 socket adaptor (except in the state of California on 6BP fixtures) and splice kit ships standard. This enables easy installation or permanent conversion to an LED source for Title 24 compliance.

Twin torsion springs ensure easy installation.

Friction clips included to allow fitment into cans without torsion brackets from an inside diameter of 6.0" to 7.0".

LISTINGS — CSA certified to US and Canadian safety standards. California T24 compliant. Wet location listed for indoor use only. WSEC ASTM E283 for Air-Tight (with IC housings). ENERGY STAR® certified product.

WARRANTY — 5-year limited warranty. Complete warranty terms located at

www.acuitybrands.com/CustomerResources/Terms_and_conditions.aspx

Note: Actual performance may differ as a result of end-user environment and application.

All values are design or typical values, measured under laboratory conditions at 25 °C.

Specifications subject to change without notice.

PATENTS PENDING.

Catalog Number
Notes
Type

LED Recessed Downlighting

6BP/60P

6" LED Module

IC/Non-IC
Retrofit



Torsion mount shown



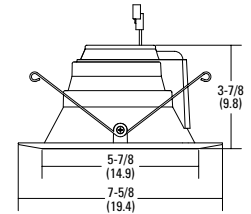
Friction clip shown
(included)



E26 adaptor



Splice kit
(included)



Specifications

Aperture: 5-7/8 (14.9)

Ceiling opening: Determined by rough-in

Overlap trim: 7-5/8 (19.4)

Height: 3-7/8 (9.8)

All dimensions are inches (centimeters) unless otherwise indicated.

ORDERING INFORMATION

Lead times will vary depending on options selected. Consult with your sales representative.

Example: 6BP TRMW LED 27K 90CRI

Series/Finish ⁴	Lamp	CCT / CRI / W / Lumens ¹	Voltage	Options
6BPMW 6" Baffle LED module, matte white	LED	(blank) 3000 K / 83 CRI / 12.7W / 725L	(blank) 120V	L7XLED T24 New construction rough-in LED base
6BP TRMW 6" Baffle LED module, black baffle, matte white flange		27K 90CRI 2700 K / 93 CRI / 10.25W / 600L		L7XRLED T24 Remodel rough-in LED base
6BPBN 6" Baffle LED module, brushed nickel		30K 90CRI 3000 K / 93 CRI / 10.25W / 600L		LC6LED T24 New construction rough-in LED base
6BPORB 6" Baffle LED module, oil-rubbed bronze				L7X New construction rough-in ²
	HL LED	(blank) 3000 K / 83 CRI / 15.2W / 950L		L7XR Remodel rough-in ²
		27K 90CRI 2700 K / 93 CRI / 16.7W / 860L		L7XP New construction shallow rough-in ²
		30K 90CRI 3000 K / 93 CRI / 16.7W / 860L		L7XPR Remodel shallow rough-in ²
				LC6 New construction rough-in ²
				LCP New construction shallow rough-in ²
				L/SKTWHIP No E26 Adapter (CA only) ³
60PA 6" Open LED module, clear diffuse	LED	(blank) 3000 K / 83 CRI / 12.7W / 725L	(blank) 120V	L7XLED T24 New construction rough-in LED base
60PAZ 6" Open LED module, clear specular		27K 90CRI 2700 K / 93 CRI / 10.25W / 600L		L7XRLED T24 Remodel rough-in LED base
60PA TRMW 6" Open LED module, clear diffuse, matte white flange		30K 90CRI 3000 K / 93 CRI / 10.25W / 600L		LC6LED T24 New construction rough-in LED base
60PAZ TRMW 6" Open LED module, clear specular, matte white flange				L7X New construction rough-in ²
	HL LED	(blank) 3000 K / 83 CRI / 15.2W / 950L		L7XR Remodel rough-in ²
		27K 90CRI 2700 K / 93 CRI / 16.7W / 860L		L7XP New construction shallow rough-in ²
		30K 90CRI 3000 K / 93 CRI / 16.7W / 860L		L7XPR Remodel shallow rough-in ²
				LC6 New construction rough-in ²
				LCP New construction shallow rough-in ²

Accessories: Order as separate catalog number.			
TSA6	Makes non-bracket housing compatible with the LED module; ships as units, J6 or J25	RK1 CG52178 E26 ADAPTER/MALE PLUG BAL DISC ASM	E26 Adapter
FL2LED	Makes L7XF housings compatible with the LED module		

Notes

- Total system delivered lumens.
- Must be ordered on a separate line.
- This option must be selected for product shipping to California.
- Energy Star valid with MW finish only.

See page 2 for Trim Inserts.

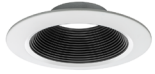
6" LED Module

TRIM INSERTS

TRIM INSERTS (for field configuration; ordered separately)

Example: 6BP TRMW R12

Series/Finish				Packaging
6BP TRMW	6" Baffle black, matte white flange insert	60PAZ	6" Open clear specular insert	R12 Retail pack of 12 units
6BPBN	6" Baffle brush nickel insert	60PA TRMW	6" Open clear diffuse, matte white flange insert	U Unit
6BPORB	6" Baffle oil-rubbed bronze insert	60PAZ TRMW	6" Open clear specular, matte white flange insert	
60PA	6" Open clear diffuse insert			



Black Baffle with Matte White Trim Ring (TRMW)



Brushed Nickel Baffle (BN)



Oil-rubbed Bronze Baffle (ORB)



Clear Diffuse with Matte White Trim Ring (A TRMW)



Clear Diffuse (A)



Clear Specular with Matte White Trim Ring (AZ TRMW)



Clear Specular (AZ)

ADDITIONAL DATA

ENERGY DATA* - 3000K Standard Lumens		
	CRI - 83	CRI - 93
Lumens	725	600
Min. starting temp	-18°C (0°F)	-18°C (0°F)
Max. temp	46°C (115°F)	46°C (115°F)
EMI/RFI	FCC Title 47 CFR, Part 15, Class B	FCC Title 47 CFR, Part 15, Class B
Sound rating	A standards	A standards
Input voltage	120V	120V
Min. power factor	0.97	0.97
Input frequency	50/60 Hz	50/60 Hz
Rated wattage	12.7W	10.5W
Input power	12.7W	10.5W
Input current	.11A	.09A

*Values at non-dimming line voltage.

ENERGY DATA* - 3000K Hi Lumens		
	CRI - 83	CRI - 93
Lumens	950	860
Min. starting temp	-18°C (0°F)	-18°C (0°F)
Max. temp	46°C (115°F)	46°C (115°F)
EMI/RFI	FCC Title 47 CFR, Part 15, Class B	FCC Title 47 CFR, Part 15, Class B
Sound rating	A standards	A standards
Input voltage	120V	120V
Min. power factor	0.97	0.97
Input frequency	50/60 Hz	50/60 Hz
Rated wattage	15.2W	16.7W
Input power	15.2W	16.7W
Input current	.13A	.14A

*Values at non-dimming line voltage.

Trim finish	Lumen multiplier
Matte White	1.00 (Baseline)
Clear Diffuse	0.99
Clear Specular	0.99
Brushed Nickel	0.83
Black Baffle	0.76
Oil Rubbed Bronze	0.78

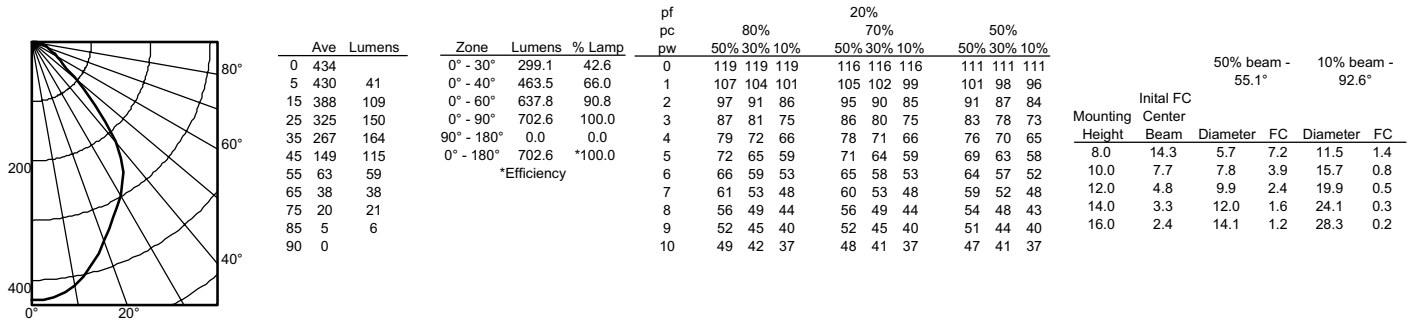
Color temperature	Lumen multiplier
2700K	0.97
3000K	1.00 (Baseline)

6" LED Module

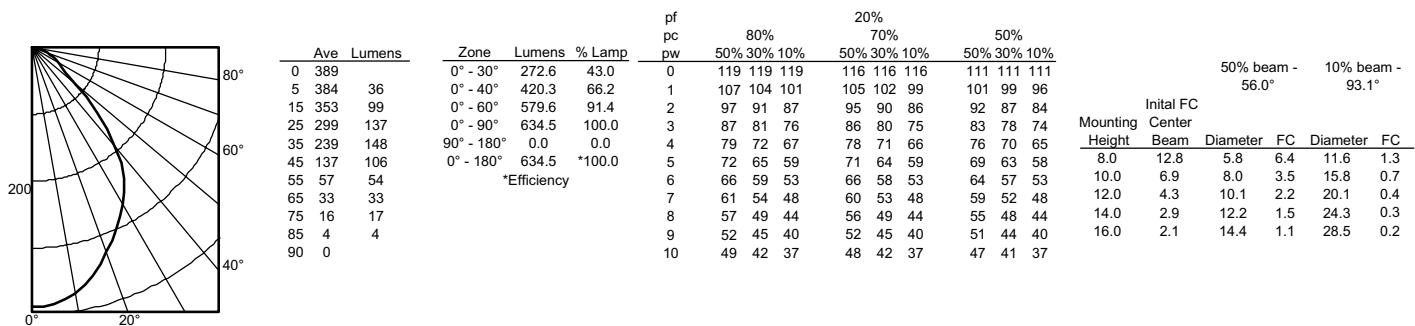
PHOTOMETRICS

Distribution Curve Distribution Data Output Data Coefficient of Utilization Illuminance Data at 30" Above Floor for a Single Luminaire

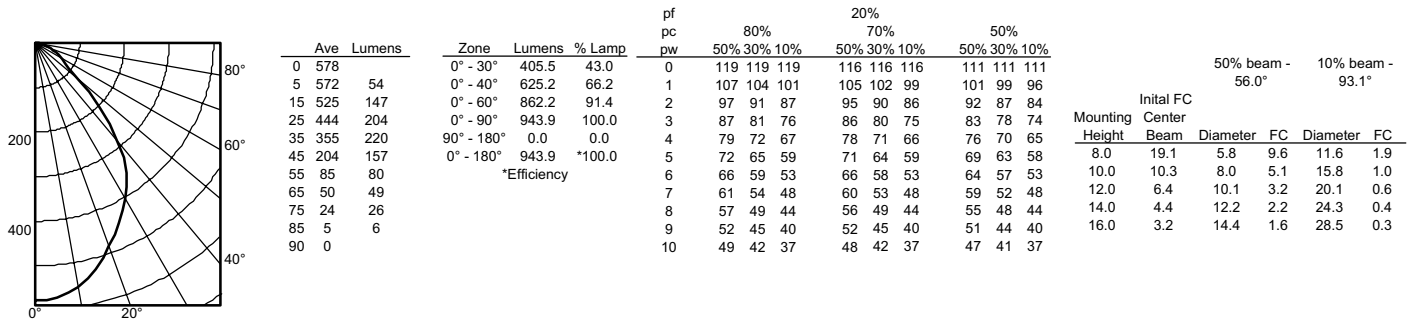
6BPMW LED, 3000 K LEDs, input watts: 12.7, delivered lumens: 703, LM/W=55.4, test no. LTL25711P, tested in accordance with IESNA LM 79-08



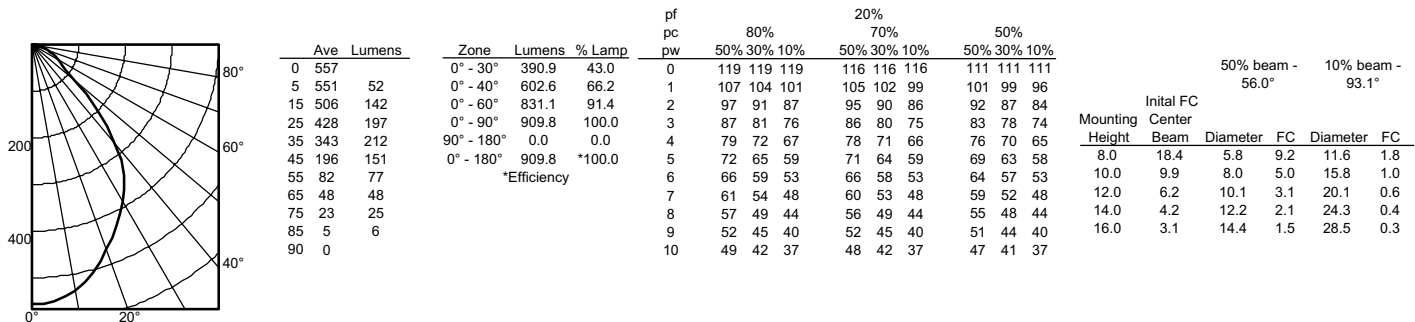
6BPMW LED 90CRI, 3000 K LEDs, input watts: 10.3, delivered lumens: 634, LM/W=62, test no. LTL 23864P, tested in accordance with IESNA LM 79-08



6BPMW HL LED 80CRI, 3000 K LEDs, input watts: 15.2, delivered lumens: 950, LM/W=63, test no. LTL23864, tested in accordance with IESNA LM 79-08



6BPMW HL LED 90CRI, 3000 K LEDs, input watts: 16.6, delivered lumens: 910, LM/W=55, test no. LTL 23864P1, tested in accordance with IESNA LM 79-08



6BP-60P LED

6" LED Module

LIGHTING FACTS

Lithonia Lighting

LED lighting facts
A Program of the U.S. DOE

Light Output (Lumens)	725
Watts	12.7
Lumens per Watt (Efficacy)	57

Color Accuracy Color Rendering Index (CRI)	83
---	----

Light Color
Correlated Color Temperature (CCT) **3000 (Bright White)**

2700K 3000K Bright White 4500K Daylight 6500K

All results are according to IESNA LM-79-2008: Approved Method for the Electrical and Photometric Testing of Solid-State Lighting. The U.S. Department of Energy (DOE) verifies product test data and results.

Visit www.lightingfacts.com for the Label Reference Guide.

Registration Number: JB22-FL7QHW (2/27/2014)
Model Number: 6BPMW LED
Type: Retrofit Kit - Downlight

Lithonia Lighting

LED lighting facts
A Program of the U.S. DOE

Light Output (Lumens)	600
Watts	10.5
Lumens per Watt (Efficacy)	57

Color Accuracy Color Rendering Index (CRI)	93
---	----

Light Color
Correlated Color Temperature (CCT) **2700 (Warm White)**

2700K 3000K Bright White 4500K Daylight 6500K

All results are according to IESNA LM-79-2008: Approved Method for the Electrical and Photometric Testing of Solid-State Lighting. The U.S. Department of Energy (DOE) verifies product test data and results.

Visit www.lightingfacts.com for the Label Reference Guide.

Registration Number: JB22-2230CD (2/27/2014)
Model Number: 6BPMW LED 27K 90CRI
Type: Retrofit Kit - Downlight

Lithonia Lighting

LED lighting facts
A Program of the U.S. DOE

Light Output (Lumens)	600
Watts	10.5
Lumens per Watt (Efficacy)	57

Color Accuracy Color Rendering Index (CRI)	93
---	----

Light Color
Correlated Color Temperature (CCT) **3000 (Bright White)**

2700K 3000K Bright White 4500K Daylight 6500K

All results are according to IESNA LM-79-2008: Approved Method for the Electrical and Photometric Testing of Solid-State Lighting. The U.S. Department of Energy (DOE) verifies product test data and results.

Visit www.lightingfacts.com for the Label Reference Guide.

Registration Number: JB22-3LWMVY (2/27/2014)
Model Number: 6BPMW LED 30K 90CRI
Type: Retrofit Kit - Downlight

Lithonia Lighting

LED lighting facts
A Program of the U.S. DOE

Light Output (Lumens)	950
Watts	15.2
Lumens per Watt (Efficacy)	63

Color Accuracy Color Rendering Index (CRI)	84
---	----

Light Color
Correlated Color Temperature (CCT) **3000 (Bright White)**

2700K 3000K Bright White 4500K Daylight 6500K

Warranty** **Yes**

All results, except LED Lumen Maintenance, are according to IESNA LM-79-2008: Approved Method for the Electrical and Photometric Testing of Solid-State Lighting. The U.S. Department of Energy (DOE) verifies product test data and results.

** See www.lightingfacts.com/products for details.

Registration Number: JB22-0426NN (8/5/2013)
Model Number: 6BP HL [Revised 07-25-13]
Type: Recessed downlight

Lithonia Lighting

LED lighting facts
A Program of the U.S. DOE

Light Output (Lumens)	860
Watts	16.7
Lumens per Watt (Efficacy)	51

Color Accuracy Color Rendering Index (CRI)	93
---	----

Light Color
Correlated Color Temperature (CCT) **2700 (Warm White)**

2700K 3000K Bright White 4500K Daylight 6500K

All results are according to IESNA LM-79-2008: Approved Method for the Electrical and Photometric Testing of Solid-State Lighting. The U.S. Department of Energy (DOE) verifies product test data and results.

Visit www.lightingfacts.com for the Label Reference Guide.

Registration Number: JB22-007G2I (2/27/2014)
Model Number: 6BPMW HL LED 27K 90CRI
Type: Retrofit Kit - Downlight

Lithonia Lighting

LED lighting facts
A Program of the U.S. DOE

Light Output (Lumens)	860
Watts	16.7
Lumens per Watt (Efficacy)	51

Color Accuracy Color Rendering Index (CRI)	93
---	----

Light Color
Correlated Color Temperature (CCT) **3000 (Bright White)**

2700K 3000K Bright White 4500K Daylight 6500K

All results are according to IESNA LM-79-2008: Approved Method for the Electrical and Photometric Testing of Solid-State Lighting. The U.S. Department of Energy (DOE) verifies product test data and results.

Visit www.lightingfacts.com for the Label Reference Guide.

Registration Number: JB22-F1LFT2 (2/27/2014)
Model Number: 6BPMW HL LED 30K 90CRI
Type: Retrofit Kit - Downlight