



CATALOG NUMBER	TYPE
PROJECT NAME	DATE

## SPECIFICATIONS

### FEATURES

- Steel remote-capable surface/pendant mount emergency light
- Designed for surface mounting with optional pendant mounting
- Ideal for most indoor applications

### CONSTRUCTION

- Rugged 20-gauge steel construction
- Caddy bars may be ordered for suspended ceiling applications
- Strut channel nuts and rods not supplied.

### LAMP

- Utilizes two 8W halogen lamps with an aluminum reflector; LED lamping offered as an option, consult factory for more information

### ELECTRONICS

- Dual voltage input capability: 120/277V
- Low-voltage disconnect
- AC indicator light with test switch
- Brownout protection

### BATTERY

- Lead-acid battery is standard, and provides a minimum of 90 minutes of illumination in emergency mode
- Nickel-cadmium battery offered as an option
- Operating temperature range: 10-40° C

### COMPLIANCE

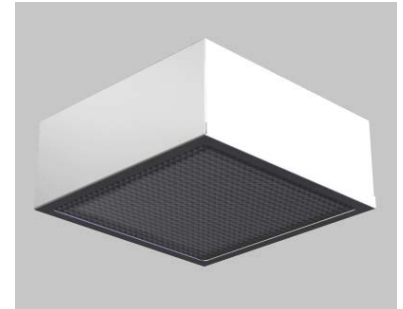
- Meets or exceeds UL 924, NFPA 101, NEC and OSHA illumination standards

### WARRANTY

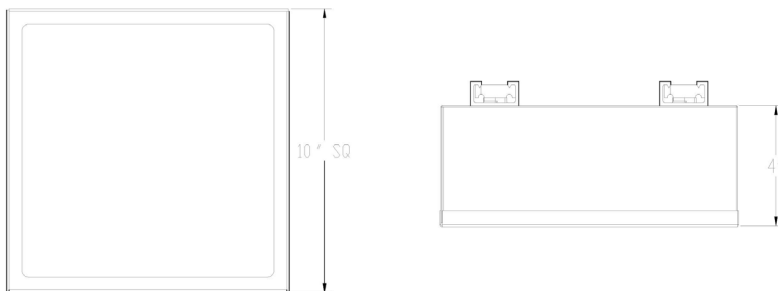
- 5-year warranty on housing and electronics. Battery is prorated

## ASQ-S

REMOTE-CAPABLE SURFACE/PENDANT EMERGENCY UNIT



## DIMENSIONS



Material	Mounting	Code Compliance	Dimensions
Steel	Surface / Pendant	UL 924	10" W X 10" H X 4" D

## ORDERING GUIDE

MODEL	HOUSING COLOR	TOTAL DC WATTAGE	DC VOLTAGE	OPTIONS
ASQ-S	<b>B</b> Black	<b>16</b> 16W	<b>6</b> 6V	<b>220</b> 220 VAC Input <b>SD</b> Self Diagnostics <b>TD</b> Time Delay <b>PT</b> Pendant two-strut channels mounted to top <b>NC</b> Nickel-cadmium battery
	<b>W</b> White	<b>32<sup>1</sup></b> 32W	<b>12<sup>1</sup></b> 12V	

### Notes:

1. 32W only available at 12V
2. Must Specify AC Input Voltage and Delay Time