

## CH LED Series

Die-cast aluminum universal trim white LED edge-lit exit sign



Designed for elegant interiors, this premium die-cast aluminum exit sign uses a modular design for mounting flexibility.

### Construction

- Face plate: Virgin acrylic face plate is thin, silk-screened to provide a flawless legend. Face plates are available with red letters on a white background
- Housing: Die-cast aluminum back box, trim ring, trim plate and canopy
- U-shaped clear acrylic legend panel features laser-etched letters and chevrons

### Mounting

- All mounting configurations use the same basic components. Inserting a trim ring allows for recessed mounting on walls or ceilings. Applying a canopy allows for surface mounting on ceilings or walls as back or end mount.

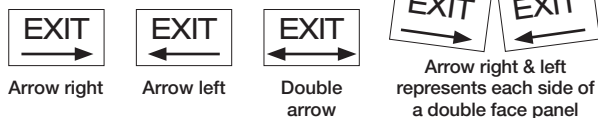
### Finishes

- Standard finish is brushed aluminum with other finishes available as an option

### Chevrons

- Silk screened as specified

### Arrow (chevron) designation



NOTE: Wording and chevrons not to scale. For illustration purposes only.

### LEDS

- White LED light source, 10-year life expectancy

### Self-diagnostics

- Self-powered models available with or without Improved Diagnostics

### Special wording panels

- Available. Contact your sales representative with your design requirements

### Approvals

- Listed to UL 924 Standards
- City of Chicago Approved

### Warranty

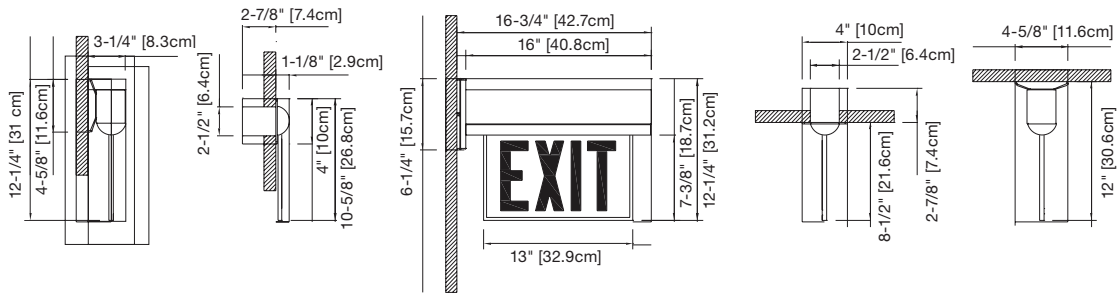
- Five-year full warranty (subject to proper installation and maintenance)  
Detailed warranty terms located at: [www.lightalarms.com](http://www.lightalarms.com)



### Power consumption chart

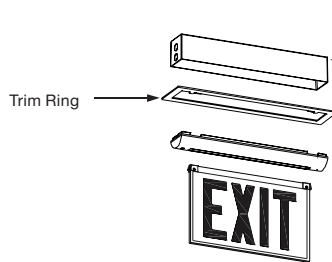
Model	AC specs	DC specs
AC-only	120-277VAC (Less than 2.5W)	-
AC/DC	120-277VAC (Less than 2.5W)	6 to 24VDC (Less than 2.5W)
Self-powered	120-277VAC (Less than 3.5W)	Nickel-cadmium battery (2 hours)
Self-powered diagnostic	120-277VAC (Less than 3.5W)	Nickel-cadmium battery (2 hours)

**Dimensions** (Dimensions are approximate and subject to change):

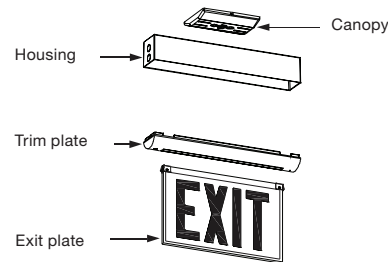


\*ADD 1-1/2" TO HEIGHT OF UNIT WHEN ORDERING PANEL WITH ARROW

**Recessed models**



**Surface models**



**Accessories** (Order as a separate item)

Description	Product code
Pendant, white	PW-*
Pendant, black	PB-*
Pendant, gray	PA-*

\*Specify white (WT) or black (BK) housing

**Backbox** (Order as a separate item)

Description	Product code
Backbox kit white	BBKTS-WT-L
Backbox kit black	BBKTS-BK-L
Backbox kit brushed aluminum	BBKTS-BA-L
Backbox kit chrome	BBKTS-CH-L
Backbox kit dark bronze	BBKTS-DB-L
Backbox kit polished brass	BBKTS-PB-L

**Ordering format**

Custom spec	Series	Color of trim plate	Panel type	Trim plate	Legend style	Options
<b>CH</b> = City of Chicago	<b>SLD</b> = AC-only <b>SLDC</b> = AC/DC - remote 6-24V <b>SLD2</b> = AC-dual circuit <b>SPLD</b> = Self-powered <b>SPLDD</b> = Self-powered diagnostic	<b>A</b> = Brushed aluminum <b>W</b> = White <b>B</b> = Black <b>DB</b> = Dark bronze (painted) <b>PB</b> = Polished brass <b>CH</b> = Polished chrome	<b>Blank</b> = Red-white Chicago legend	<b>D</b> = Dome shape <b>P</b> = Pyramid shape	<b>Single face panels</b> #2A= STAIRS (No arrows) #3= EXIT (No arrows) #5A= STAIRS (Arrow right →) #6= EXIT (Arrow right →) #8A= STAIRS (Arrow left ←) #9= EXIT (Arrow left ←) #11A= STAIRS (Double arrows ↔) #12= EXIT (Double arrows ↔)  <b>Double face panels</b> #17A= STAIRS (No arrows) #18= EXIT (No arrows) #23A= STAIRS (Double arrows ↔) #24= EXIT (Double arrows ↔) #20A= STAIRS (Arrow left ← and arrow right →, one arrow on each side) #21= EXIT (Arrow left ← and arrow right →, one arrow on each side)	<b>DL</b> = Damp locations  <b>Housing shipped less panel</b> <b>LP</b> = Less panel, (shipped separately)

**Example: CHSLD2AD#2A**