

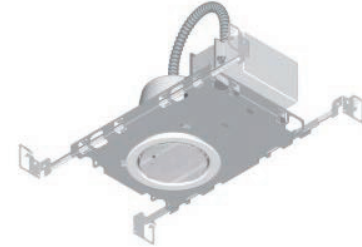


EMLED Series - ELD



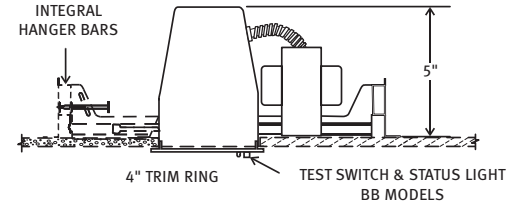
PROJECT: _____
 FIXTURE TYPE: _____
 LOCATION: _____
 CONTACT/PHONE: _____

The ELD is our most efficient recessed emergency fixture for new construction. The ELD features an architectural recessed housing designed for interior use. This sleek unit is available with a satin white or custom finish. Very effective in long corridors, it is inconspicuous and will blend with general lighting fixtures without affecting the appearance of ceiling layouts. The high light output allows for fixture spacing up to 55FT in 9FT ceilings. Ideal for any indoor application requiring attractive unit equipment.



PRODUCT FEATURES

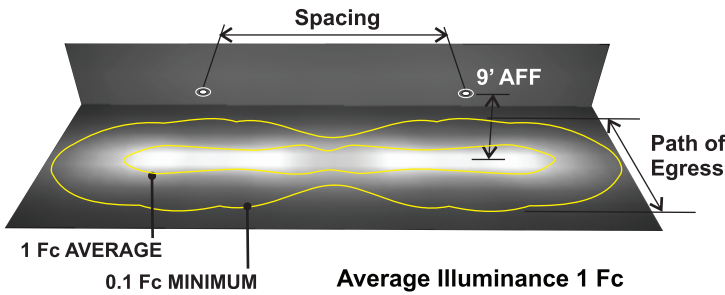
- Optional Damp Rating (DP) available
- Optional custom colors available
- Standard finishes: White and Black
- 120/277V dual primary, 60Hz input for standard operation
- Optional Self-Diagnostics (DG) available
- ETL listed 90 minute emergency run time, 24 hour recharge time
- External LED status indicator and test button
- Variety of LED lamping options 7 or 10 Watts
- Designed for new construction installations
- Compact, flush-mount, 4" recessed down light requirements and Buy American Recovery Act provisions
- Meets American Recovery & Reinvestment Act of 2009 (ARRA)
- Superior 55 foot center-to-center spacing
- Made in the USA
- 5 year warranty



ORDERING INFORMATION

MODEL	OPERATION	POWER RATING	HOUSING COLOR	OPTIONS
ELD	BB = Battery Backup	Battery Backup Models	BL = Black	DP= Damp Location
	AC = AC Supply	7L2 = 7 Watts / 2 Lamp	W = White	DG= Battery Diagnostics (BB Models Only)
		10L3 = 10 Watts / 3 Lamp	X = Custom	SB120= Security Lighting with Control Switch for Standard BB Operation (120V)
		AC Models		SD277= Security Lighting with Control Switch for Standard BB Operation (277V)
		4 = 4 Watts		SD= Security Lighting with Control Switch for BB Operation with DG Option (120/277V)
		7 = 7 Watts		

Ordering Example: ELD-BB-10L3-W-DG



SPACING GUIDE

Model	Mtg. Ht.	SPACING		
		Path of Egress Width		
		3 Ft.	6 Ft.	10 Ft.
7 L2	9'	50'	40'	25'
10 L3*	9'	55'	50'	40'

NOTE: TESTED IN ACCORDANCE WITH IES STANDARD LM-79-08 FOR SOLID STATE LIGHTING PRODUCTS. FOR REFERENCE ONLY. STANDARD REFLECTANCES 80/50/20. Mule IS NOT RESPONSIBLE FOR SPECIFIC CONDITIONS THAT MAY ALTER THE RESULTS. COMPLETE IES PHOTOMETRIC DATA AVAILABLE AT www.mulelighting.com FOR YOUR CONVENIENCE.

SUGGESTED SPECIFICATIONS

Install EMLED Series ELD Recessed LED downlight emergency lighting fixture manufactured by Mule Lighting, Inc. Upon loss of AC building power, lighting will be activated for a minimum of 90 minutes under battery power, in compliance with UL 924 and NFPA LSC Code 101. The battery charger and power supply shall have universal input of 120/277 VAC, with brownout and LVD circuit protection. Auto battery diagnostics shall be available for all models, as specified and shall perform all test functions specified by UL 924 and NFPA 101.

SELF-DIAGNOSTICS

The optional battery diagnostics continuously monitors the operating condition of the AC power, battery supply voltage, emergency lamp continuity and charging circuit.

The purpose of this option is to provide visual indication in response to a fault that may be occurring in the fixture.

The circuit will perform a 30 second discharge and self-test every 28-30 days. A 90 minute discharge and self-test is performed every 6 months.

STATUS	LED DISPLAY
NORMAL FULL CHARGE	● GREEN ON
NORMAL FAST CHARGE	● ORANGE ON
FAILED BATTERY	● RED FLASH FAST
FAILED LAMP	● GREEN FLASH
FAILED TRANSFER	● ORANGE FLASH
FAILED CHARGER	● RED FLASH SLOW

CONSTRUCTION

The ELD features a new construction housing offering a 4" trim ring with standard galvanized steel can and back plate including integral hanger bars. Heat and impact resistant polycarbonate lens resists discoloration.

ILLUMINATION

Units can be supplied with LED's offering 7 watts or 10 watts of light output. The high performance LED's have an expected life of up to 100,000 hours with normal use.

ELECTRICAL

INPUT

Dual-voltage input 120 or 277VAC @ 60 Hz

BATTERY

Units are supplied with a Sealed Nickel Cadmium battery (NiCad) that is maintenance-free and has a 15 year life expectancy. NiCad batteries offer high discharge rates and perform optimally in temperatures ranging from 0-40 degrees C.

EMERGENCY

The ELD will operate for a minimum of 90 minutes during a loss of power and features a maximum recharge time of 24 hours for the battery.

The LED lamps are connected in parallel so if one lamp fails, the balance of the LED's will continue to operate. The power supply delivers a regulated current and voltage to the LED lamps to optimize the lamp life. A momentary test switch and indicator light are included.

INSTALLATION

The ELD unit is installed as a recessed housing with trim for new construction applications. This new construction emergency downlight is supplied with integral bar hangers, standard recessed can, back plate and lensed trim.

OPTIONS

DAMP LOCATION

The optional Damp Location rating (DP) ensures that the fixture is designed to operate safely in outdoor locations that are protected from the direct elements. Damp location units may be installed indoors. Products with a damp location rating are not designed to withstand constant or significant moisture or direct contact with water or steam.

SECURITY/NIGHT LIGHTING

The optional Security/Night Lighting Control allows the fixture to be used as both an emergency lighting fixture and a security/night lighting fixture. Units with this option will operate each LED at 2 Watts (SW option) offering 50% output when in security mode and connected to an active building AC supply and wired according to installation instructions. The security lighting circuit is independent of the emergency lighting and may be switched manually by exterior photocell or other automatic means.