



CATALOG NUMBER	TYPE
PROJECT NAME	DATE

SPECIFICATIONS

FEATURES

- Heavy-duty steel emergency unit with remote capability
- Unit capacity: 125W
- Easy installation facilitated by universal mounting plate and keyhole slots

CONSTRUCTION

- 20-gauge steel construction
- Available with two, three, or no lamp heads
- Choice of white or black powder coat finish

LAMP

- Adjustable square heads with 10W bi-pin halogen lamps; consult factory for more options

ELECTRONICS

- Dual-voltage 120/277 60Hz
- AC lockout and brownout protection
- AC indicator light with test switch

BATTERY

- Lead-calcium battery is standard and provides a minimum of 90 minutes of illumination in emergency mode
- Operating temperature range: 0 °C to 40 °C

COMPLIANCE

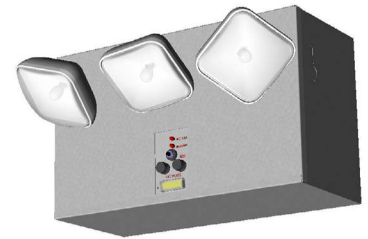
- Meets or exceeds UL 924, NFPA 101, NEC and OSHA illumination standards

WARRANTY

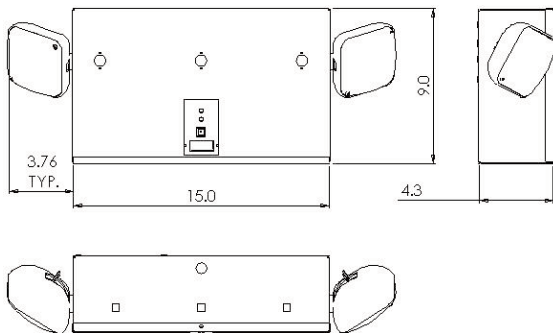
- 5-year warranty on housing and electronics. Battery is prorated

EU-HD-125

125W HEAVY DUTY EMERGENCY LIGHT



DIMENSIONS



ORDERING GUIDE

MODEL	DC WATTAGE	INTEGRAL HEADS	DC VOLTAGE	HOUSING COLOR	OPTIONS
EU-HD Heavy Duty Halogen Emergency Light	125 125 Watts	NH² No Heads 2² Two Heads 3² Three Heads	6 6V DC 12 12V DC	B Black W White	220 220 VAC Input SD Self Diagnostics CAD-24 Caddy-Bars REM Remote Capability DL Damp Location TD¹ Time Delay

Notes:

1. Must specify AC input voltage and delay time
2. To determine maximum remote wattage, subtract total integral lamp watts from total DC unit wattage