

PROJECT NAME:	APPROVED BY:
CATALOG NO:	TYPE NO:

# LCP SERIES - LED Emergency Power Packs

The Evenlite LCP series LED conversion packs are U.L. Classified for field installation allowing the conversion of LED luminaires to be used for normal and emergency operation. Available in 7, 12 & 25 watt capacities to suit a wide range of LED drivers and luminaire types. The LCP is suitable for indoor and damp locations and fit seamlessly into or adjacent to the luminaire. In the event of power loss the LCP switches to emergency mode and operates the existing luminaire for 90 minutes. The LCP series are among the first LED Emergency drivers to feature superior Lithium Iron Phosphate batteries which also enable compact enclosures.



## Construction

- Compact galvanized steel housing finished in durable polyester paint
- Plenum rated remote test switch with integral AC indicator, mounted in a single gang plate and provided with switch box and quick connector
- 24" lead wires with dual flexible metallic conduit
- IC Rated and suitable for use in plenum and damp location luminaires

## Electrical

- Self-sensing array forward voltage (see table for model output voltage range), LCP automatically adjusts the output current to provide constant wattage to the luminaire array for 90 minutes
- Constant power operation maintains illumination throughout the discharge time without degradation
- Long Life, thermally safe high capacity maintenance free Lithium Iron Phosphate battery, provides the required 90 minutes emergency duration and environmentally friendly end of life recycling
- Two wire universal 120-277 line sensing input 50/60Hz
- Energy efficient solid-state switching power supply, Class 2 compliant and meets California Title 20
- Standard operating temperature range 32° - 122°F (0° to 50°C)
- Programmed two-stage solid state charger with charge and discharge protection and rapid 24 hour recharge
- High surge protected to ANSI standard
- Zero current LVCO ensures positive charge acceptance following an extended battery discharge
- Brownout sensing assures emergency illumination during periods of low line voltage
- RoHS Compliant

## Certification

- Tested and Listed by Underwriters Laboratories in compliance with UL924 , and CSA-C22.2 No.141-15
- UL924 classified for field installation
- UL 1310 Certified, Class 2 compliant
- Meets or exceeds NFPA 101 Life Safety Code, NFPA 70-NEC and OSHA requirements
- California Title 20 Certified



## Warranty

- 5 Year Fixture Limited Warranty - view complete terms on line at [www.evenlite.com/warranty/terms](http://www.evenlite.com/warranty/terms)



Model	Output Power (max)	Output Voltage Range	Output Current	Input Power Rating 120/277V (max)
LCP7DF	7 Watts	10-60VDC	.7A (@10VDC) .12A(@60VDC)	5 Watts
LCP12DF	12 Watts	10-60VDC	.1.2A (@10VDC)- .2A(@60VDC)	5 Watts
LCP25DF	25 Watts	20-50VDC	.1.25A (@20VDC)- .5A(@50VDC)	8.5 Watts

Caution: Not suitable for luminaires/drivers with output voltages higher than shown in the output current table above. Check luminaire LED driver specifications to verify compatibility.

**Example:** LCP25DF

## ORDERING GUIDE - LCP Series

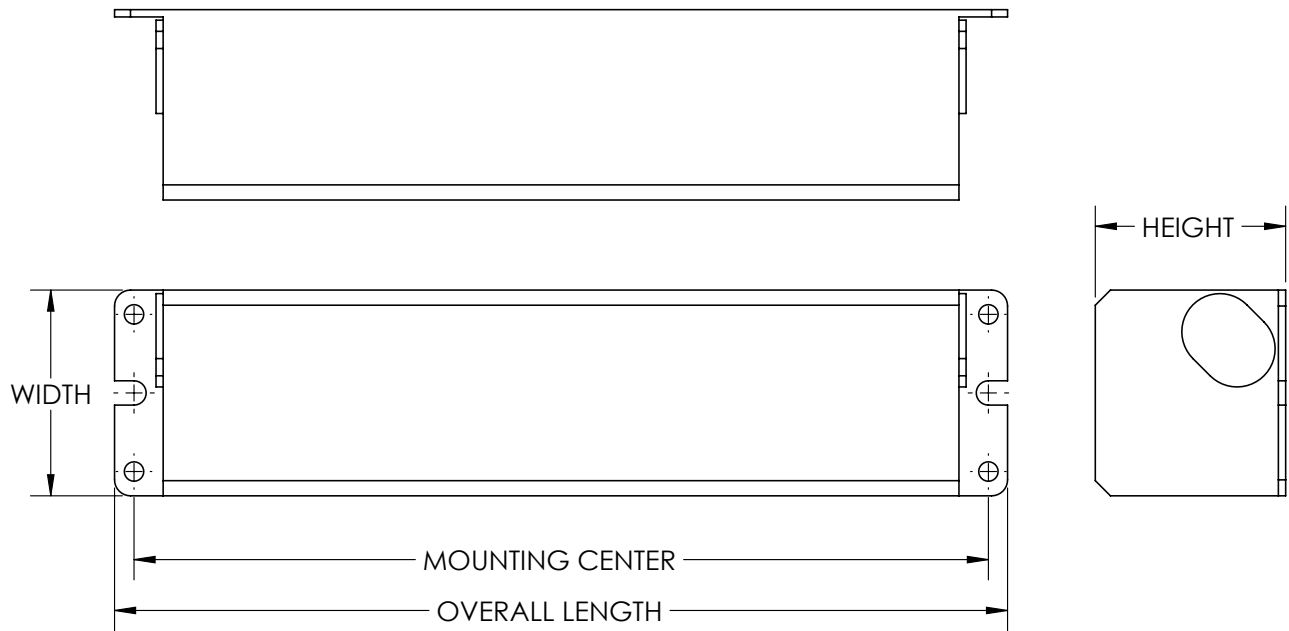
Model	Output Rating	Wire Configuration
LCP	7      7 Watt 12      12 Watt 25      25 Watt	DF Dual Flexible Conduit 24" (both ends)
LCP		

Fill in fields from categories above and complete type and part number.

Type Number:

Full Part Number:

# LCP Series - LED Emergency Power Packs



**LCP Dimensions**

Model	Length	Width	Height	Mounting Center
LCP7	9.84"	2.24"	1.18"	9.273"
LCP12	11.024"	2.543"	1.544"	10.457"
LCP25	11.024"	2.543"	2.35"	10.457"

