



CATALOG NUMBER	TYPE
PROJECT NAME	DATE

SPECIFICATIONS

FEATURES

- Recessed through-wall night light
- Choice of three face designs: full opal lens, straight louver, or angled louver

CONSTRUCTION

- Galvanized steel construction
- Factory pre-assembled and supplied with all necessary mounting brackets/straps needed for installation
- Choose from four finishes: brushed aluminum, white, black, or bronze; consult factory for more options

ILLUMINATION

- 12 white LEDs can be used as a direct or indirect lighting source

ELECTRONICS

- 120/277 VAC input draws 3W max

OPTIONAL BATTERY

- Nickel-cadmium battery is standard for EM option
- Optional battery backup provides a minimum of 90 minutes of illumination in emergency mode

COMPLIANCE

- Meets UL standards

WARRANTY

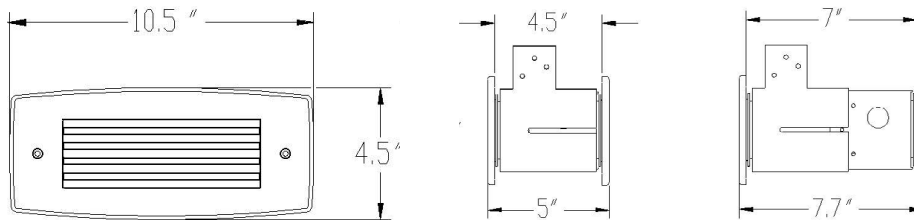
- 5-year limited warranty on housing and electronics

NLT NIGHTLIGHT

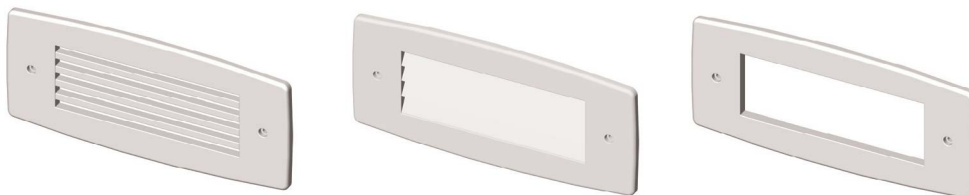
THROUGH-WALL NIGHT LIGHT



DIMENSIONS



FACEPLATE DESIGNS



ORDERING GUIDE

MODEL	FACEPLATE	FINISH	OPTIONS
NLT Through-wall Night Light	FL¹ Full Opal Lens AL Angled Louvers SL Straight Louvers	BA Brushed Aluminum WH White BL Black BR Bronze	EM Batter Backup TPS Tamperproof Screws TPSD Tamperproof Screwdriver

Notes:

1. Includes Opal Poly Lens