

Pluraluce® Mini (PLM-1)



Job/Location: _____
 Contractor: _____
 Prepared By: _____

Job Type: _____
 Date: _____

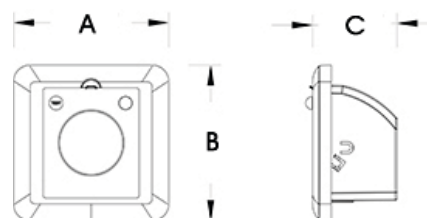


SPECIFICATIONS: INTERNAL

The **Pluraluce® Mini (PLM-1)** uses a rechargeable, maintenance free Ni-Cd battery. Configured with a universal voltage input 120-277V.

SPECIFICATIONS EXTERNAL

The **Pluraluce® Mini (PLM-1)** is constructed from high quality thermoplastic. White finish is standard (black color optional). The adjustable 2.5W, 3 LED lamp module ensures emergency lighting performance, accurate positioning and reduced maintenance. The **Pluraluce® Mini (PLM-1)** is designed for direct installation into a deep 4" x 4" square j-box. Easy field wiring & durable construction makes it suitable for recessed wall installations.



A	B	C
4 ^{1/2}	4 ^{1/2}	2 ^{1/2}
114mm	114mm	63.5mm

ORDERING LOGIC

Series	Options
PLM-1	B (black housing) S (sensor - PIR)

EXAMPLE: PLM-1S

DESCRIPTION: 4.8V, 2.5W 3 LED, 120-277V, emergency light with sensor

■ EMERGENCY MODULE

The **Pluraluce® Mini (PLM-1)** comes standard with a single adjustable 2.5W, 3 LED module. Emergency lighting module is mounted on a ratchet track for accurate positioning and locks into place. The head adjusts from 90° ~ 140° (approximately).



■ SPECIFICATIONS: MECHANICAL

The **Pluraluce® Mini (PLM-1)** features a direct to j-box design the reduces installation time. Easy field wiring & durable construction is suitable for recessed wall mount installations. Emergency lighting head is mounted on a ratchet track for accurate positioning and locks into place. External test switch and monitor LED are standard.

■ PASSIVE INFRARED SENSOR

The **Pluraluce® Mini (PLM-1S)** comes with an option for a passive infrared sensor (PIR). The PIR will activate, when ambient light levels are lower than 1.3Fc. The sensor has an activation distance of 15 feet with a 125° degree field of view. Once the sensor detects motion the unit will turn on at full output for 15 minutes and then automatically turn off. If AC power is lost, the unit will automatically switch to emergency mode.

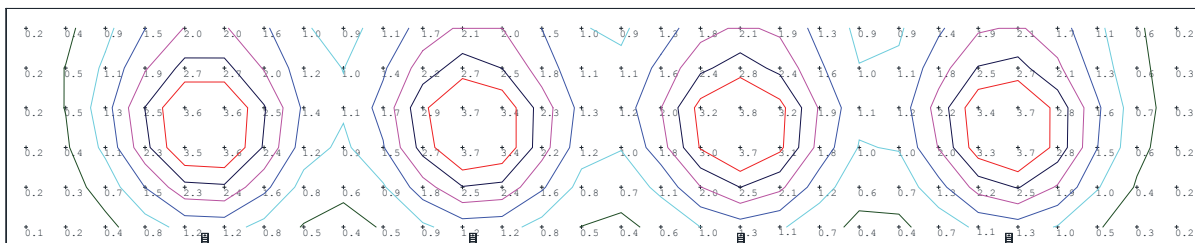
■ SPECIFICATIONS: ELECTRICAL

BATTERY: The **Pluraluce® Mini (PLM-1)** uses a rechargeable, maintenance free 4.8V 1800mAh Ni-MH battery that provides minimum emergency duration of 90 minutes. The recharge time of the battery is 24 hours. The maximum working temperature is +104°F (+40°C). The minimum working temperature is +50°F (+10°C).

■ WARRANTY

The **Pluraluce® Mini** comes with a 3-year factory warranty. Deliberate damage, misuse, improper installation effectively cancel the warranty.

■ PERFORMANCE



- Mounting Height: 7 ft.
- Area: 6 ft. x 30 ft. x 10 ft.
- Spacing: 6.75 ft. on Center
- Average: 1.54Fc
- Max: 3.8Fc
- Min: 0.1Fc
- Avg/Min: 15.4Fc
- Max.Min: 38.0Fc