



XPEH SERIES

Explosion Proof LED Emergency Light & Exit Sign



PROJECT: _____
 FIXTURE TYPE: _____
 LOCATION: _____
 CONTACT/PHONE: _____



FEATURES

- Two high lumen spot lights can be adjusted in horizontal and vertical planes
- Independent battery backup system for exit signs and spotlights
- Unit can power up to two optional remote spot lights
- Field replaceable LED circuit boards and drivers with quick disconnects
- Emergency battery back-up integral to sign (no additional enclosure required)
- 3-hour emergency operation
- Edge-lit sign
- Wall, pendant and end mounting options
- Captive, hinged-access door
- Wide and narrow-beam optics available
- Separate push-to-test and pilot light for local and remote heads
- Separate sealed NiCad batteries for exit sign
- Alternate exit legend and languages available
- Single- or double-sided option
- Three 1" NPT hubs
- Red or green LED options
- Body: A360 aluminum (less than .4% copper content) with baked-on gray epoxy finish
- Gasket: One-piece neoprene
- Sign: Acrylic
- Hardware: Stainless steel

PRODUCT DESCRIPTION

XPEH series LED Emergency Light and Exit Sign uses a maintenance free LED light source and sealed Ni-Cad batteries. This emergency fixture meets or exceeds NFPA 70, NFPA 101, EPA Energy Star and OSHA requirements. These fixtures are also suitable for installations in wet or damp locations where salt water spray is possible.

MAXIMUM INPUT POWER

- XPEH Emergency Light with:
- Red Exit Sign & 2 LED heads - 6.5 W
- Red Exit Sign & 4 LED heads - 10.5 W
- Green Exit Sign & 2 LED heads - 7 W
- Green Exit Sign & 4 LED heads - 11W

| Combinations Available | | |
|------------------------|--------|---------|
| Installed | Remote | Drivers |
| 2 | 0 | 1 |
| 1 | 1 | 1 |
| 0 | 2 | 1 |
| 2 | 2 | 2 |
| 1 | 3 | 2 |
| 0 | 4 | 2 |



ORDERING INFORMATION

| Series | No. of Faces | Legend Color | Voltage/Frequency | Installed Heads | Remote Heads ¹ | Options ² |
|---|--------------|--------------|--------------------|-----------------|---------------------------|------------------------------------|
| XPEH | 1 = Single | R = Red | DT = 120/277V 60HZ | 0 = None | 0 = None | N = Narrow Beam Optics |
| Class I, Division 1, Groups C & D | 2 = Double | G = Green | 24 = 220-240V 50HZ | 1 = One | 1 = One | W = Wide Beam Optics |
| Class II, Division 1, Groups E, F & G Class III | | | | 2 = Two | 2 = Two | X = EXIT Legend in other languages |
| Class I, Zone 1, Groups IIA, IIB, UL 844, 1598, 8750, 924 | | | | | 3 = Three | (Language must be Specified) |
| UL 1598A Marine Outside Type (Salt Water) | | | | | 4 = Four | |
| USCG Regulation 46 CFR Subparts 111.75-15 (e) & 112.43 | | | | | | |
| CUL, IP65, NEMA 4X | | | | | | |
| Suitable for Wet Locations | | | | | | |

EXAMPLE: XPEH-1-R-DT-1-2-N

¹ XPEH Series emergency lights with remote head option are provided with extra LED driver. Remote heads can only be wired to the emergency fixtures with remote head option. LED heads are furnished with 1/2"-14 NPT male hub, must be installed on suitably listed explosion proof junction box not provided by RAL. ² Consult Factory for pricing.



XPEH SERIES

Explosion Proof LED Emergency Light & Exit Sign

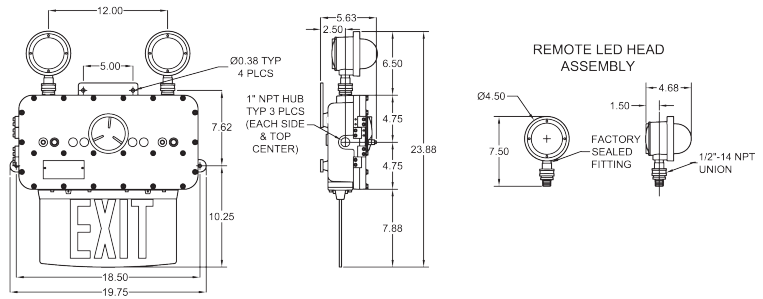


PROJECT: _____
 FIXTURE TYPE: _____
 LOCATION: _____
 CONTACT/PHONE: _____

CLASSIFICATIONS

- Class I, Division 1, Groups C & D, Class II, Division 1, Groups E, F & G
- Class III
- Class I, Zone 1, Groups IIA, IIB
- UL 844, 1598, 8750 & 924
- UL 1598A Marine Outside Type (Salt Water)
- USCG Regulation 46 CFR Subparts 111.75-15(e) & 112.43
- CUL
- IP65
- NEMA 4X
- Suitable for Wet Locations
- Patent No. 7,287,347;
- Other patents pending

DIMENSIONS



Emergency Combo
 Emergency Combo with Remote Heads Option*
 Remote Head Assembly
 *Remote Head Assemblies are shipped separately. (Additional weight of the emergency light is due to extra driver for remote heads.)

| Shipping Weight | Shipping Volume |
|-----------------|-----------------|
| 40.5 lbs. | 3.1 cu. ft. |
| 43.5 lbs. | 3.1 cu. ft. |
| 3.5 lbs. | 0.27 cu. ft. |

MAXIMUM OUTPUT DATA

Each Remote Head:

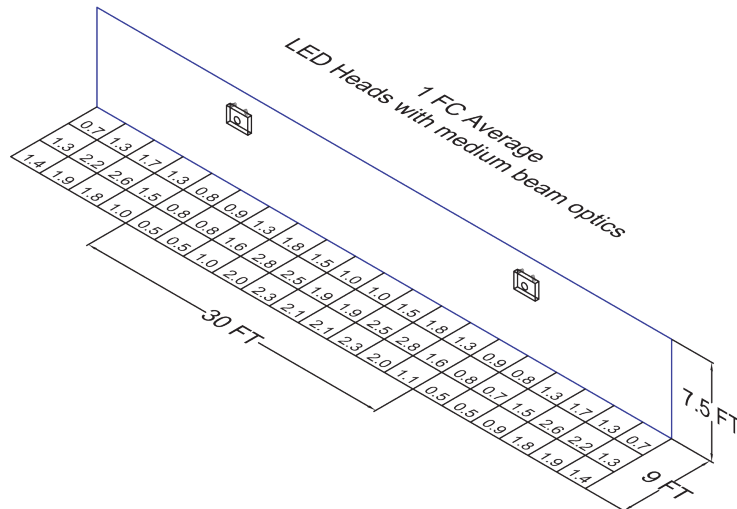
- Voltage: 22V DC. max.
- Current: 0.225 A (225mA)
- Max. Power: 5 W

CERTIFICATION GUIDE

| XPEH Series Emergency Combo with: | Ambient Temperature Range | Class I, Division 1 Groups C & D | Class II, Division 1 Groups E, F & G Class III | Simultaneous Presence Class I & II | UL 1598A Marine | CUL |
|-----------------------------------|---------------------------|----------------------------------|--|------------------------------------|-----------------|-----|
| Green Exit Sign | +10°C to +40°C | T6 | T6 | T6 | Yes | Yes |
| Red Exit Sign | +10°C to +55°C | T6 | T6 | T6 | Yes | Yes |

PHOTOMETRIC DATA

XPEH LED head with medium beam optics:



| | |
|-------------------------|--------|
| Total Lumens per Head | 420.78 |
| Output Power per Head | 4.83 |
| Efficacy (Lumens/Watts) | 87.12 |
| CRI | 72 |
| CCT | 5672 |

| | |
|--|------|
| Average Initial Footcandles at the Floor | 1.49 |
| Maximum Initial Footcandles at the Floor | 2.80 |
| Minimum Initial Footcandles at the Floor | 0.50 |
| Maximum to Minimum Ratio | 5.60 |