



XPEL LED SERIES

Explosion Proof LED Emergency Light



PROJECT: _____
 FIXTURE TYPE: _____
 LOCATION: _____
 CONTACT/PHONE: _____



STANDARD MATERIALS

- Body: A360 aluminum (less than .4% copper content) with baked-on gray epoxy finish
- Gasket: One-piece neoprene
- Hardware: Stainless steel

CLASSIFICATION

- Class I, Division 1, Groups C & D
- Class II, Division 1, Groups E, F & G
- Class III
- Class I, Zone 1, Groups IIA, IIB
- UL 844, 1598, 8750 & 924
- UL 1598A Marine Outside Type (Salt Water)
- USCG Regulation 46 CFR Subparts 111.75-15 (e) & 112.43
- CUL
- IP65
- NEMA 4X
- Suitable for Wet Locations
- Patent Pending

FEATURES

- High lumen spot lights (2) can be adjusted in horizontal and vertical planes
- Unit can power up to 2 (optional) remote spot lights
- Field replaceable LED circuit boards and drivers with quick disconnects
- Emergency battery back-up integral to luminaire (no additional enclosure required)
- 3-hour emergency operation

ADDITIONAL FEATURES

- Wall, pendant and end mounting options
- Captive hinged-access door
- Wide- and narrow-beam optics available
- Separate push-to-test and pilot light for local and remote heads
- Provided with three (3) 1" NPT hubs

MAXIMUM OUTPUT DATA

Each Remote Head:
 Voltage: 22V DC. max.
 Current: 0.225 A (225mA)
 Max. Power: 5 W

MAXIMUM INPUT POWER

XPEL Emergency Light with:
 2 LED heads - 4 W
 4 LED heads - 8 W

Combinations Available		
Installed	Remote	Drivers
2	0	1
1	1	1
0	2	1
2	2	2
1	3	2
0	4	2



ORDERING INFORMATION

Series	Voltage/Frequency	Installed Heads	Remote Heads ¹	Options ²
XPEL	U = 120 thru 277V 50/60HZ	0 = None	0 = None	M = Medium Beam Optics (STANDARD)
Class I, Division 1, Groups C & D		1 = One	1 = One	N = Narrow Beam Optics
Class II, Division 1, Groups E, F & G		2 = Two	2 = Two	W = Wide Beam Optics
Class III			3 = Three	
Class I, Zone 1, Groups IIA, IIB,			4 = Four	
UL 844, 1598, 8750 & 924				
UL 1598A Marine Outside Type (Salt Water)				
USCG Regulation 46 Sub Part 111.75-15(e) & 112.43 CUL				
IP65				
NEMA 4X				
Suitable for Wet Locations				

¹XPEL Series emergency lights with remote head option are provided with extra LED driver. Remote heads can only be wired to the emergency fixtures with remote head option.

LED heads are furnished with 1/2"-14 NPT male hub, must be installed on suitably listed explosion proof junction box not provided by RAL.

²Consult factory for pricing.

EXAMPLE: XPEL-U-2-2-M



XPEL LED SERIES
Explosion Proof LED Emergency Light



PROJECT: _____
 FIXTURE TYPE: _____
 LOCATION: _____
 CONTACT/PHONE: _____

CERTIFICATION GUIDE

XPEL Series Emergency Light	Ambient Temperature Range	Class I, Division 1 Groups C & D	Class II, Division 1 Groups E, F & G Class III	Simultaneous Presence Class I & II	UL 1598A Marine	CUL
XPEL	+10° C to +55° C	T6	T6	T6	Yes	Yes

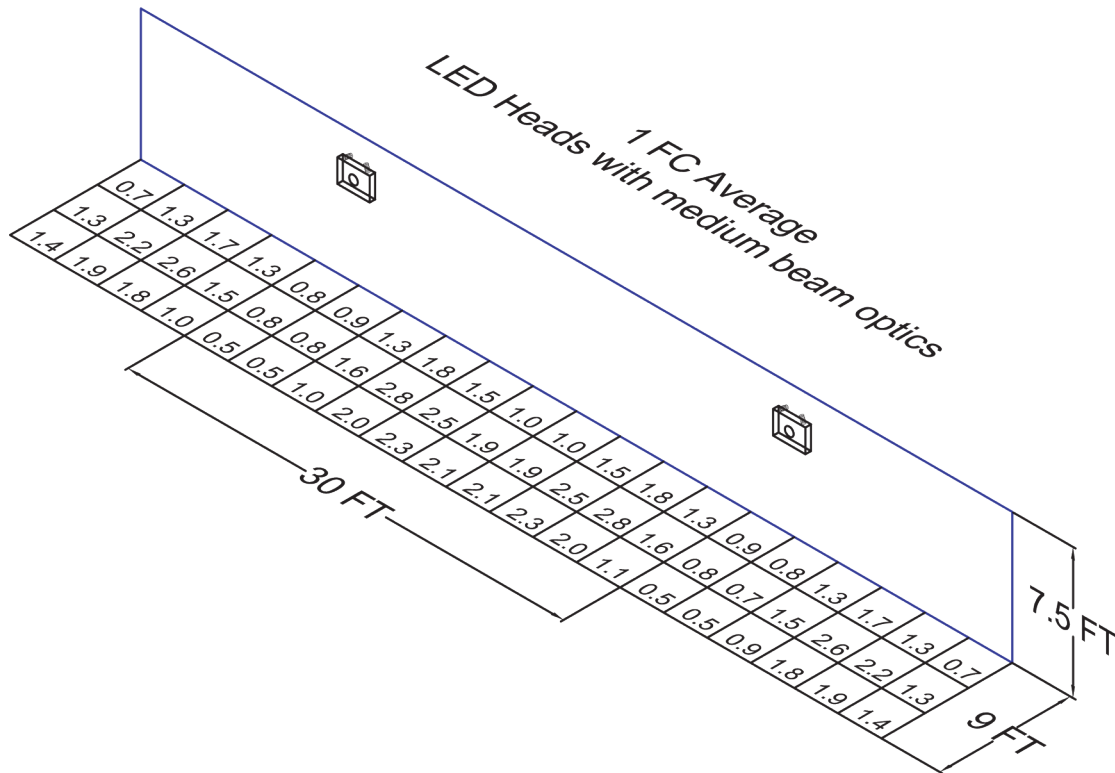
Catalog logic is for explaining catalog number structure only. Not all combinations are possible; consult factory for catalog numbers not listed in charts.

PHOTOMETRIC DATA

XPEL LED head with medium beam optics:

Total Lumens per Head	420.78
Output Power per Head	4.83
Efficacy (Lumens/Watts)	87.12
CRI	72
CCT	5672

Average Initial Footcandles at the Floor	1.49
Maximum Initial Footcandles at the Floor	2.80
Minimum Initial Footcandles at the Floor	0.50
Maximum to Minimum Ratio	5.60





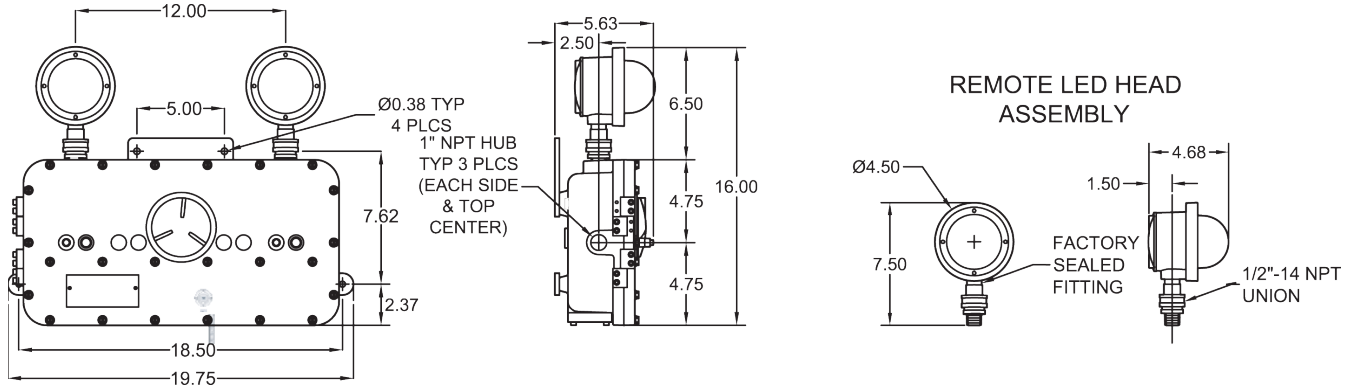
XPEL LED SERIES

Explosion Proof LED Emergency Light



PROJECT: _____
 FIXTURE TYPE: _____
 LOCATION: _____
 CONTACT/PHONE: _____

DIMENSIONS (INCHES)



XPEL SERIES	Shipping Weight	Shipping Volume
Emergency Light	35.0 lbs.	2.2 cu. ft.
Emergency Light with Remote Heads Option*	38.0 lbs.	2.2 cu. ft.
Remote Head Assembly	3.5 lbs.	0.27 cu. ft.

* Remote Head Assemblies are shipped separately.
 (Additional weight of the emergency light is due to extra driver for remote heads.)