

FEATURES & SPECIFICATIONS

INTENDED USE — Suitable for use in Class I, Div. 1, Groups C & D, Zones 0, 1 & 2, Groups IIA, IIB + H₂ & IIC; Class I, Div. 2, Groups C & D, Zone 2, Groups IIA, IIB + H₂ & IIC; Class II, Div.1, Groups E, F & G; Class II, Div. 2, Groups F & G and Class III hazardous location areas.

CONSTRUCTION — Copper-free cast-aluminum enclosure withstands explosions generated by internal arc without propagating them into the hazardous atmosphere.

Enclosure and cover constructed separately. Threaded cover allows easy attachment or removal. Enclosure has three threaded openings for 3/4" rigid conduit — one for AC input and two for mounting hazardous fixtures.

All lamps heads and remotes must be ordered and shipped separately. See **spec sheet ELA-ZX** for more details.

ELECTRICAL — 120/277 VAC dual-voltage input with surge-protected, solid-state charging circuitry.

Low-voltage disconnect (LVD) feature disconnects battery prior to unacceptable deep discharge, but not before required 90-minute emergency operation.

AC lockout feature prevents battery drain prior to energizing of utility power. Wiring and electrical connections can be completed without energizing the emergency circuit.

Brownout protection circuitry automatically switches unit into emergency mode if utility voltage drops below 20% of nominal.

Battery charging circuitry utilizes constant-current charger for nickel-cadmium battery units. Battery recharge time after full discharge less than required by UL 924 standard.

Sealed, maintenance-free nickel-cadmium battery providing 90-minute emergency operation at full light output.

INSTALLATION — Wall mount only.

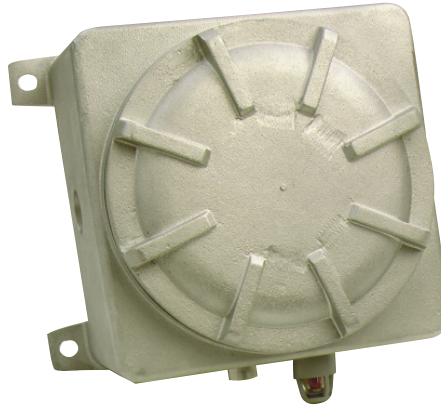
LISTINGS — UL Listed. Meets UL 924, 844, 1203, 1604, NFPA 70, NFPA 101, NEC and OSHA illumination standards.

WARRANTY — 3-year limited warranty. Complete warranty terms located at: www.acuitybrands.com/support/customer-support/terms-and-conditions

Note: Actual performance may differ as a result of end-user environment and application. Specifications subject to change without notice.

Catalog Number
Notes
Type

Explosion-proof Emergency Lighting Units

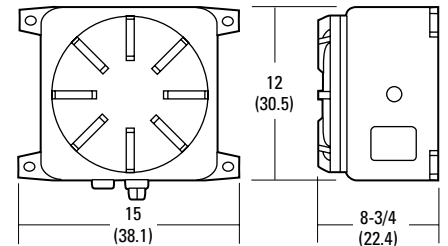


ZX

6 AND 12 VOLTS
14-85 WATTS

Specifications

Height:	12 (30.5)
Width:	15 (38.1)
Depth:	8-3/4 (22.4)



ORDERING INFORMATION

Lead times will vary depending on options selected. Consult with your sales representative.

Example: ZX614N TD1

Series	Voltage ³	Options
6V, nickel-cadmium ZX614N 14 watts ² ZX628N 28watts 12V, nickel-cadmium ¹ ZX1250N 50 watts	(blank) 120/277	KLD Key lock two-way, battery disconnect for servicing TD1 Time delay 120 VAC TD2 Time delay 277 VAC

<i>Order as separate item.</i>	
ELA ZX CF0706 TM	7W compact fluorescent remote head, top mount ^{4,5}
ELA ZX DRH	12V, 12W remote head (tungsten halogen, G4 2pin lamp) ⁶

Notes

- Incandescent or halogen emergency lamp operation only. Compact fluorescent not compatible.
- Compatible only with ELA ZX remotes (**spec sheet ELA-ZX**) using 7-watt compact fluorescent lamps. Will not operate incandescent lamps. Maximum remote mounting distance is 8'. Operates in both AC and DC operations.
- Some special voltages available. Consult factory.
- See spec sheet **ELA-ZX** for other 6V and 12V remote heads and mounting options.
- Only available with ZX614N.
- Must be used with ZX1250N unit.

ZX Explosion-proof Emergency Lighting Units

SPECIFICATIONS

ELECTRICAL

120 VAC - .50 amps, 60 watts

277 VAC - .22 amps, 60 watts

OPERATION		Watts to 87-1/2 of rated voltage			
DC Voltage	Unit	1-1/2 hrs.	2 hrs.	4 hrs.	8 hrs.
6	ZX614N	14	10.5	6.75	—
	ZX628N	28	22.5	14.4	—
12	ZX1250N	50	37.5	24	8.5

BATTERY				
Nickel-Cadmium				
Voltage	Shelf life ¹	Typical life ¹	Maintenance ³	Optimum temperature ²
6 and 12	3 years	7-9 years	none	32°–100°F (0°–37.8°C)

Notes

- At 77°F (25°C).
- Optimum ambient temperature range where unit will provide capacity for 30 to 90 minutes. Higher and lower temperatures affect life and capacity.
- All life safety equipment, including emergency lighting for path of egress must be maintained, serviced, and tested in accordance with all National Fire Protection Association (NFPA) and local codes. Failure to perform the required maintenance, service, or testing could jeopardize the safety of occupants and will void all warranties.

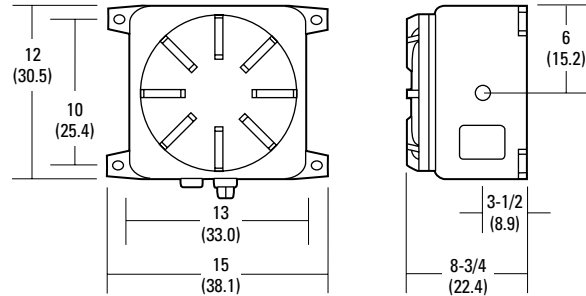
DIMENSIONS

All dimensions are in inches (centimeters).

Shipping weight: ZX614N - 63 lbs. (28 kgs.)

ZX628N - 65 lbs. (29 kgs.)

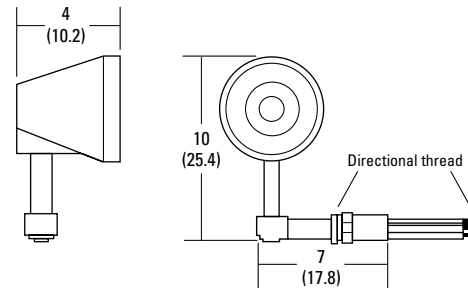
ZX1250N - 67 lbs. (30 kgs.)



All dimensions are in inches (centimeters).

Includes clearance holes for mounting with 1/2" bolts.

ELA ZX DRH Accessory



Directional thread allows for lamp head adjustability.