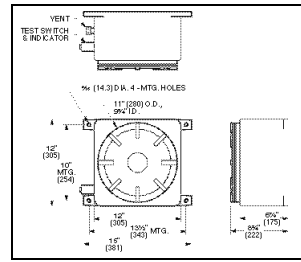
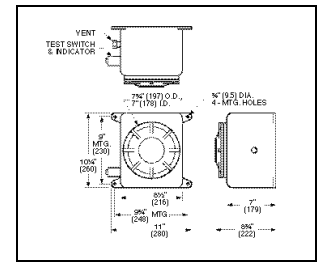


700 Series

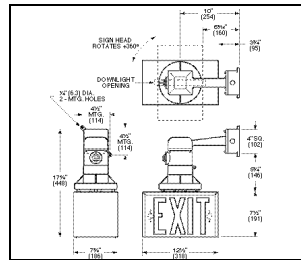
6, 12 VDC and 120 VAC for PL 13 Models



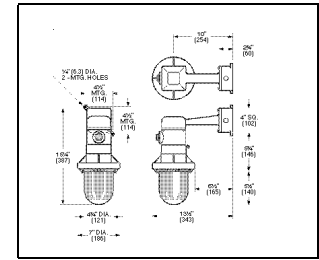
System Control Housing Models 700, 701, 702, 720



System Control Housing Models 703, 704, 721, 722



Exit Sign



Emergency Light

Application

Specify High-Lites Explosion-Proof Series Systems in areas which require an emergency lighting system designed for safe operation in NEC Class 1, Divisions 1 or 2, Groups C&D; or Class II, Divisions 1 or 2, Groups E, F, and G.

Standard Features

- Rugged housing.
- Pure lead long life battery.
- Capable of operating multiple fixtures.
- Dual 120 or 277 VAC input, field selectable.
- 1-1/2 hours of light to an end battery voltage of 87-1/2% of nominal voltage.
- Solid-state line-latched low voltage disconnect circuit provides DC load disconnect protection to guard against damaging battery deep discharge.
- Short circuit and overload protection on DC output circuit.
- Automatic brownout feature.
- Solid-state charging circuit.
- Momentary test switch.
- AC lockout feature reduces installation time.
- AC ready light.
- 744 MODEL NORMALLY ON OR OFF. (SPECIFY)

Emergency Light/Exit Sign Fixtures†

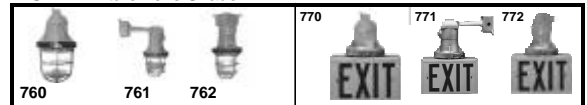
- EL1-** Single lighting head
- EL2-** Double lighting heads
- EL3-** Three lighting heads

- ES1-*** Single face exit sign
- ES2-*** Double face exit sign

Remote Lighting Fixtures

- 760-** Single lighting head - pendant mount
- 761-** Single lighting head - wall mount
- 762-** Single lighting head - ceiling mount
- 770-*** Exit sign, pendant mount
- 771-*** Exit sign, wall mount
- 772-*** Exit sign, ceiling mount

-FS Fixture Lens Shade



**Lamp Selection Table - All Fixtures

Suffix	Volts	Watts	Type
-21	6	6	Double Contact
-27	6	8	
-26	6	12	
-28	6	18	
-29	6	22	Incandescent Style
-65	12	5	
-104	12	8	
-102	12	12	
-99	12	16	PL Style
-67	12	22	
-130	120	13	

* Specify Red letters (R), on white background, or, Green letters (G), on white background

† Indicate on sales order left and/or right side, or center positions of factory installed emergency lights and exit signs.

Options - Factory Installed

-220	220-50Hz VAC Input
-TD-120	Time Delay Monitor - 120 VAC
-TD-277	Time Delay Monitor - 277 VAC

Unit Selection Chart

Model No.	Volts	Capacity in Watts to 87-1/2% Nominal Voltage			
		1-1/2 HRS.	2 HRS.	3 HRS.	4 HRS.
700	6	15	12	8	6
701	6	25	19	13	9
702	6	36	27	18	14
703	6	50	38	25	19
704	6	75	57	38	28
720	12	30	23	15	12
721	12	50	38	25	19
722	12	75	57	38	28
744	120	FOR 2 PL 13 TYPE LAMPS			