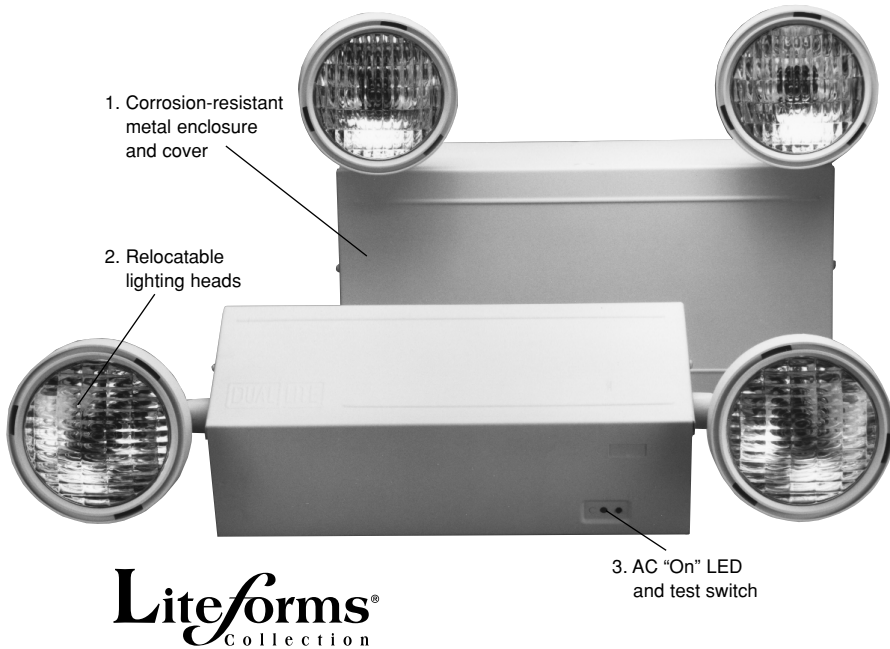


DUAL LITE

LM Series

Corrosion-resistant, rugged metal units featuring remote capacity, fully adjustable lighting heads and easy installation.

Available in standard and damp location models.



1. Corrosion-resistant metal enclosure and cover

2. Relocatable lighting heads

3. AC "On" LED and test switch

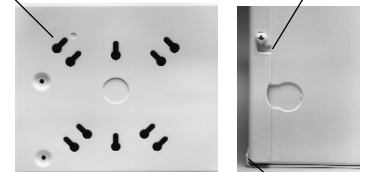
An **ULTREx**
Severe Conditions Product



4. Universal electrical box knockout pattern — mounts boxes up to 4" square

6. Slot in cover allows easy installation or removal, without fully backing out retaining screws

5. Keyhole wall mounting knockouts (not shown) on Enclosure Style 2



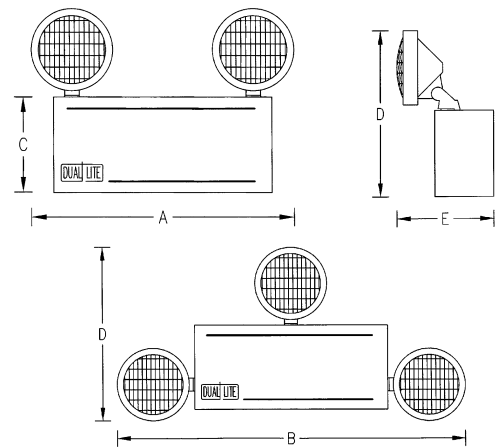
7. Enclosure extension captures bottom of cover securely

Liteforms
Collection

Features

- Easy to install
- Long-life, maintenance-free battery
- 6- & 12-volt models
- Fully adjustable, glare-free lighting heads
- Lighting heads supplied top mounted; relocatable to side mounting position
- Available with additional unit-mounted lighting head
- Available without lighting heads for powering remote mounted fixtures
- White, corrosion-resistant housing and cover
- 120/277VAC, 60 Hz operation standard (220-240VAC, 60 Hz optional)
- Keyhole universal mounting slots allow easy installation of chassis to electrical box
- Low-voltage battery disconnect and transformer isolation protection
- Test switch and AC-On indicator
- Matching remote fixtures available
- Damp location listed models available
- Optional Spectron® self-diagnostic/self-testing electronics
- Models operate for 90 minutes
- Operating Temperature Range
 - Standard models: 20° to 30°C (68°F to 86°F)
 - Damp location models: 0° to 40°C (32°F to 104°F)
- UL 924 Listed (Emergency Lighting)

Dimensions



Dimensions in inches (") and centimeters (cm)

| Encl. Style | A | B | C | D | E |
|-------------|-----------------|-------------------|------------------|---------------|------------------|
| 1 | 16" 40.6cm | 23 3/4" 60.3cm | 5 3/4" 14.6cm | 11" 27.9cm | 6 1/4" 15.9cm |
| 2 | 18 1/2" 47cm | 26 1/4" 66.7cm | 7 3/4" 19.7cm | 13" 33cm | 7" 17.8cm |



Lighting, Inc.

Construction

Housing and Cover: Corrosion-resistant steel
Lamp Housings: UL-recognized flame-rated thermoplastic
Finish Color: Ceiling white

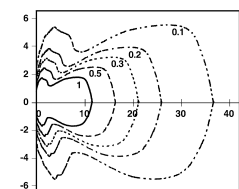
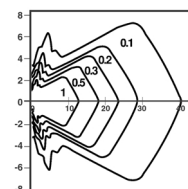
Illumination

Lamp type: Incandescent PAR 36 sealed beam type
Lamp Voltage: 6- or 12-volt, depending on model
Lamp Wattage: 7.2W
Rated Lamp Life: 100 hours

Photometrics

6-volt, 7.2 watt SBT lamp

12-volt, 7.2 watt SBT lamp



(horizontal isofootcandle distribution)

Installation

Unit Wall Mounting: Mounts through universal knockout pattern to standard electrical boxes up to 4" square. Also, mounts to wall surface through keyhole mounting slots.

Wiring: Pre-stripped transformer leads provided. All AC connections made inside unit housing. Fused distribution board provided for connection of remote lighting fixtures

Electronics

Input: 120/277VAC, 60 Hz (standard)
Built in-Protection: Transformer isolation and low-battery voltage disconnect
Charger: Fully automatic, constant voltage, current limited
Transfer: Electric relay
Distribution: Fused leads
Battery Recharge Cycle: Per UL time standards
Test Means: Integral test switch
Indicators: LED AC-ON indicator

Battery

Type: (LM2, LM16) maintenance-free pure-lead
 (All others) maintenance-free lead-acid

Power Consumption

Maximum: 15 watts (all models)

Compliances

UL 924 and NFPA-101 (all models)
 UL Damp Location Listed (designated models only)

Warranty

Unit and Electronics: 3 years full

Battery

| Maintenance-Free Battery Type | Warranty Period | | |
|-------------------------------|-----------------------|-----------------|---------|
| | No-Charge Replacement | Pro-Rata Charge | Total |
| Pure-Lead | 3 years | 3 years | 6 years |
| Lead-Calcium | 1 year | 5 years | 6 years |

Product Selector

| Standard Models | DC Volts | Enclosure Style ⁽¹⁾ | Total Watts For: ⁽²⁾ | | | |
|-----------------|----------|--------------------------------|---------------------------------|--------|--------|--------|
| | | | 1 1/2 Hrs. | 2 Hrs. | 3 Hrs. | 4 Hrs. |
| LM2 | 6 | 1 | 14 | — | — | — |
| LM16 | 6 | 1 | 16 | — | — | — |
| LM33 | 6 | 1 | 33 | 25 | 17 | 13 |
| LM40 | 6 | 1 | 40 | 31 | 21 | 16 |
| LM54 | 6 | 2 | 54 | 42 | 29 | 22 |
| LM66 | 6 | 2 | 66 | 51 | 35 | 27 |
| LM80 | 6 | 2 | 80 | 62 | 43 | 33 |
| LM110 | 6 | 2 | 110 | 85 | 59 | 46 |
| LM130 | 6 | 2 | 130 | 101 | 70 | 54 |
| LM40-12V | 12 | 1 | 40 | 31 | 21 | 16 |
| LM54-12V | 12 | 2 | 54 | 42 | 29 | 22 |
| LM66-12V | 12 | 2 | 66 | 51 | 35 | 27 |
| LM80-12V | 12 | 2 | 80 | 62 | 43 | 33 |
| LM110-12V | 12 | 2 | 110 | 85 | 59 | 46 |
| LM130-12V | 12 | 2 | 130 | 101 | 70 | 54 |

| Damp Location Models | DC Volts | Enclosure Style ⁽¹⁾ | Total Watts For: ⁽²⁾ | | | |
|----------------------|----------|--------------------------------|---------------------------------|--------|--------|--------|
| | | | 1 1/2 Hrs. | 2 Hrs. | 3 Hrs. | 4 Hrs. |
| LM28D | 6 | 1 | 28 | 21 | 15 | 11 |
| LM34D | 6 | 1 | 34 | 26 | 18 | 14 |
| LM46D | 6 | 2 | 46 | 35 | 24 | 19 |
| LM56D | 6 | 2 | 56 | 43 | 30 | 23 |
| LM68D | 6 | 2 | 68 | 53 | 36 | 28 |
| LM93D | 6 | 2 | 93 | 72 | 50 | 39 |
| LM112D | 6 | 2 | 112 | 87 | 60 | 47 |
| LM34D-12V | 12 | 1 | 34 | 26 | 18 | 14 |
| LM46D-12V | 12 | 2 | 46 | 35 | 24 | 19 |
| LM56D-12V | 12 | 2 | 56 | 43 | 30 | 23 |
| LM68D-12V | 12 | 2 | 68 | 53 | 36 | 28 |
| LM93D-12V | 12 | 2 | 93 | 72 | 50 | 39 |
| LM112D-12V | 12 | 2 | 112 | 87 | 60 | 47 |

| Options (add suffix to model number) | |
|---|-------------------|
| Spectron self-diagnostic/self-testing electronics ⁽²⁾⁽³⁾ | I |
| Voltmeter ⁽⁵⁾ | -V |
| Unit supplied with three lighting heads | -3 |
| Unit supplied without lighting heads | -0 |
| Halogen lamp option ⁽⁶⁾ | -T |
| Auxiliary 3-conductor line cord (120VAC only) ⁽³⁾⁽⁴⁾ | -A3 (120V) |
| Auxiliary 3-conductor line cord (277VAC only) ⁽³⁾⁽⁴⁾ | -A3 (277V) |
| 220-240VAC, 60Hz operation ⁽⁷⁾ | -24K |

| Accessory Items (order separately) | |
|---|---------------|
| Wire Guard (Top mounted heads only) | 40G |
| Matching remote lighting head (single) ⁽⁶⁾ | REMPW |
| Matching remote lighting head (twin) ⁽⁶⁾ | REMPWD |

(1) Reference dimensioned illustrations on front side
 (2) Add "I" immediately after base model number. Example: LM50I
 (3) Not available with LM2 model
 (4) Not available with LM16 model
 (5) Not available in combination with Spectron option on Enclosure Style 1
 (6) Refer to Data Sheet 0600686 for all available optional incandescent and halogen lamps. Specify lamp voltage and wattage when ordering. Example: LM-54 (6V, 25W)
 (7) Not available on units with capacities over 80 watts for 1.5 hours
NOTE: Spectron models with over 80 watts of capacity require a minimum load of 35 watts for accurate lamp failure indications

Suggested Specification

Construction will consist of NEMA 1 corrosion-resistant steel enclosure in ceiling white finish. Design will allow 120/277VAC, 60Hz operation standard. Total unit output capacity shall be _____ watts. Emergency illumination will be provided by two integral (6 volt) (12 volt), _____ watt incandescent PAR 36 sealed beam type lighting heads, and _____ V, _____ W remote lamps/fixtures. Units shall be designed to mount directly to wall surfaces through keyhole knockouts in the back plate. A universal knockout pattern shall be provided in the unit back plate for mounting to all standard electrical boxes up to 4" square. Emergency components will include a fully automatic, constant voltage, current limited type battery charger; a (6 volt) (12 volt) maintenance-free (pure-lead)(lead-acid) battery; an electric relay for transfer to emergency lighting mode; an AC-On indicator light; and a test switch. The unit charger will be capable of recharging the battery within acceptable UL time standards. Emergency operation must be provided for a minimum of _____ hours. Connections for remote lighting fixtures shall be fused. Units must comply with all UL 924 and NFPA 101 Life Safety Code requirements. Dimensions to be (____ in.) (____ cm) high by (____ in.) (____ cm) wide by (____ in.) (____ cm) deep. Specified equipment to be Dual-Lite model: _____ . Optional equipment will include: _____ .