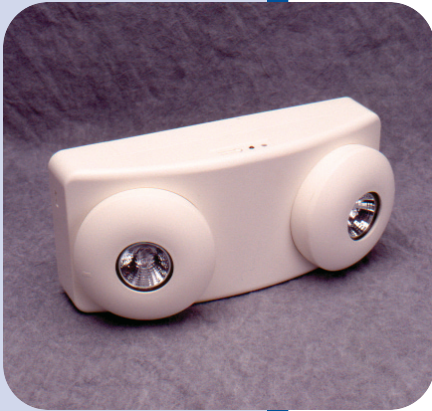




DZ-PAR



DZ-MR

Dimensions

DZ-PAR

Height: 5.5"
 Width: 12.125"
 Depth: 4.0"

DZ-MR

Height: 5.5"
 Width: 12.125"
 Depth: 4.125"

Series Features

- Integrated Solid State System
- Multi-Rate, Controlled, Automatic Charger
- Lock Out (Automatic Battery Connect)
- Low-Voltage Battery Cutoff
- Brownout Sensitivity
- Dual-Voltage Transformer for 120/277 VAC Operation
- Maximum Input Rating
 120VAC 60 Hz 0.20 Amps
 277VAC 60 Hz 0.20 Amps
- DZ-PAR: PAR-36 Type, High-Intensity Tungsten Lamps, 6-Watt
- DZ-MR: MR-16 Type, Halogen Lamps, 5-Watt
- Sealed Lead Calcium Battery
- 6-Volt Operation
- Maintenance-Free
- Injection-Molded Thermoplastic Housing
- Snap-Together Design for Fast Installation
- Fully Adjustable Lighting Heads
- Off-White Finish
- Wall or Ceiling Mount
- LED Charge Rate Indicator
- Test Switch
- Damp Location Listed
- UL Listed

Unit Information

Model Number	Std. Lamp Watt	Watts per Hour								Replacement Battery
		1.5	2	3	4	5	6	7	8	
DZ-PAR	6	12	-	-	-	-	-	-	-	(1) S65
DZ-MR	5	12	-	-	-	-	-	-	-	(1) S65

Illumination is rated to 87.5% of nominal system voltage and recharge to full capacity within 24 hours.
 NEC requires 1.5 hours of emergency illumination.

Ordering Information

DZ	-PAR
Series	Head Type

