

6, 12 & 24 Volt Harsh Environment Enclosures **KS Series**



NRTL. UL 924

The **KS Steel Series** is designed to protect circuitry and connections from harmful dust, liquids and atmospheric contaminants.

UL Listed

Complies with NEC, Life Safety Code and OSHA.

Sealed Maintenance-Free Batteries

- Nickel Cadmium • Long Life Lead
- Lead Calcium (Free Electrolyte) • Lead Calcium

Unit Rating Chart

Furnished standard with two 9 watt High Intensity Incandescent lamps.

UNIT EQUIPMENT - NO REMOTE CAPABILITY								
Sealed Maintenance-Free Battery Types	D.C. Voltage	Model Number	*Watts to 87 1/2% of rated battery voltage				Unit Housing	
			1 1/2 hrs.	2 hrs.	3 hrs.	4 hrs.		
Nickel Cadmium Δ	6	KSC18-2**	18	12	10	7	S	
Long Life Lead Δ	6	KSE18-2	18	11	8	6	S	
UNIT EQUIPMENT - WITH REMOTE CAPABILITY								
Nickel Cadmium Δ	6	KSC25-2**	25	18	9	5	S	
	12	12KSC36-2**	36	21	12	6	S	
	12	12KSC50-2**	50	36	18	10	S	
	24	24KSC100-2	100	73	37	20	S	
Long Life Lead Δ	6	KSE27-2	27	19	10	5	S	
	6	KSE36-2	36	24	13	7	S	
	6	KSE54-2	54	36	20	11	S	
	6	KSE80-2	80	65	35	19	S	
	6	KSE110-2	110	74	43	21	S	
	6	KSE160-2	160	130	70	38	L	
	12	12KSE36-2	36	24	13	7	S	
	12	12KSE54-2	54	37	21	10	S	
	12	12KSE110-2	110	74	43	21	S	
	24	24KSE110-2	110	74	43	21	S	
	Lead Calcium (Free Electrolyte) Δ	6	KC87-2	87	70	41	24	S
		6	KC100-2	100	77	47	24	L
6		KC175-2	175	140	82	48	L	
Lead Calcium Δ	6	KSM27-2	27	18	10	6	S	
	6	KSM54-2	54	37	21	12	S	
	6	KSM81-2	81	54	30	18	S	
	6	KSM110-2	110	72	40	24	S	
	12	12KSM54-2	54	37	21	12	S	
	12	12KSM110-2	110	72	40	24	S	
	24	24KSM110-2	110	72	40	24	S	

*National Electrical Code Specification Δ = Advanced diagnostics available
 **CSA NRTL UL924 Listed

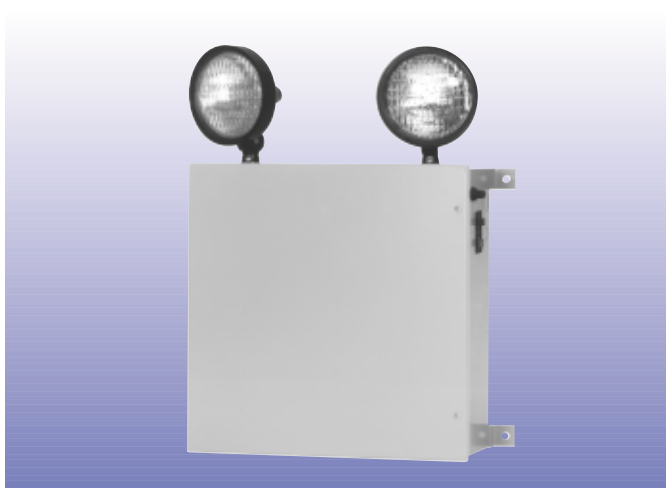
How To Order (example)

For standard units without options only order Series, Battery, Watts, Heads *Options are added to units by listing suffix at end of model #*

KS - E - 18 - 2 - *(ZD) - TD(5)

Series Battery Type Watts Heads Lamp Option Option
 long life lead for 90 min. on unit 6V 9W Incandescent Time Delay

Includes standard lamp *see lamp data sheet in lighting fixture section for other lamp wattages.



Standard Features

Reliability

The KS Series comes complete with a 3-year full warranty.

Enclosure Data

Constructed of 14 gauge steel with a fully gasketed hinged door and separate battery compartment. It is finished with a gray baked epoxy enamel. Up to three weather resistant thermoplastic heads can be mounted on the enclosure.

PulsePlus Charger

PulsePlus circuitry offers 120/277 volt input 60 Hz., 0.3 Amp (other inputs available), fused output circuit(s), dual diagnostic indicator lights, temperature compensation, sealed relay, low voltage battery disconnect, brownout protection and lockout (automatic battery connect).

Optional Features

Description

Add Suffix

Advanced diagnostics.....AD
 Advanced diagnostics, non-audible.....ADNA
 Lamp disconnect switch.....LD
 Time delay (specify 5, 10 or 15 minutes).....TD*
 Cord & plug – special voltage (specify plug type).....OXP**

* Not required with the AD option.

**Standard cord is 3 ft., custom lengths available.

Enclosure Outline and Dimensions

Dimensions are approximate and subject to change.

