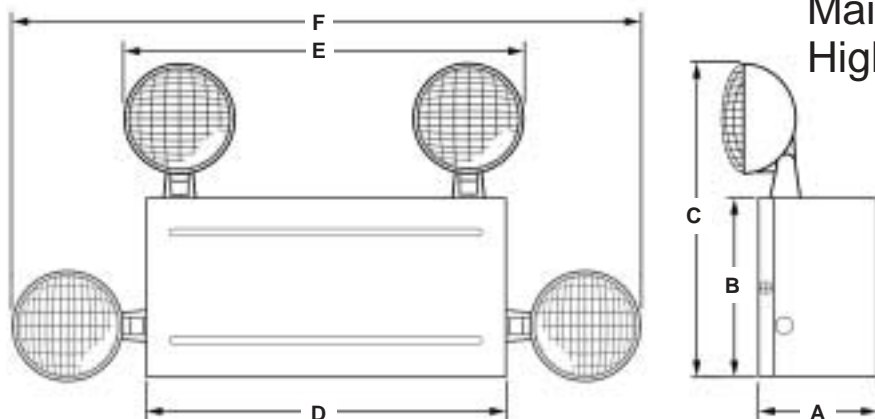


Maintenance-Free Battery
High Capacity Emergency
Lighting Units



Enclosure Style	A	B	C	D	E	F
1	3 ⁷ / ₈ " 9.8 cm	5 ³ / ₄ " 14.6 cm	11 ¹ / ₂ " 29.2 cm	13 ¹ / ₂ " 34.3 cm	15 ³ / ₄ " 40.0 cm	25" 63.5 cm
2	4 ³ / ₄ " 12.1 cm	7 ³ / ₄ " 19.7 cm	13 ¹ / ₂ " 34.3 cm	15 ³ / ₄ " 40.0 cm	18" 45.7 cm	27 ¹ / ₄ " 69.2 cm

The LMP series is ideal for commercial applications where contemporary styling and reliability are prime concerns. With a variety of wattages available, the LMP

series can be used as a stand-alone fixture or in conjunction with remote heads to form an integrated system. All units provide dual voltage input and sealed beam type lamps.



Standard Features

- Easy to install
- Universal mounting pattern
- White, corrosion-resistant metal housing and cover
- Maintenance-free battery
- 6- & 12-volt models
- Damp location models available
- Glare-free lighting heads
- Lampheads may be top or side mounted
- Available with third lamphead
- Available without lampheads
- Matching remote fixtures
- 120/277VAC operation standard (220-240VAC, 50/60 Hz optional)
- Fully automatic, solid-state charger
- Low-voltage battery disconnect
- Transformer isolation protection
- Test switch and LED AC-On light
- Optional **CVS** self-testing electronics
- Temperature range: 20°C to 30°C (68°F to 86°F) (Damp location models: 10°C to 40°C (50°F to 104°F))
- UL924 Listed

Model Numbers

See "Product Selector Guides" for available models.

Options (Add suffix to catalog number)

- CVS** Continuous Verification System⁽¹⁾⁽²⁾
-V Voltmeter
-3 Unit supplied with 3 lampheads⁽²⁾⁽³⁾
-0 Unit supplied without lampheads⁽²⁾⁽³⁾
-A3 (120V) Auxiliary 3-conductor AC line cord (120V)
-A3 (277V) Auxiliary 3-conductor AC line cord (277V)
-24K 220-240VAC, 60Hz operation (80 watts units or less only)
-T Halogen lamp option⁽⁴⁾

(1) Add "CVS" self-test option suffix immediately after base model number.
Example: LMP33CVS

(2) Not available on LMP2 model

(3) Not available on LMP16 model.

(4) Specify voltage and wattage when ordering.

NOTE: CVS models with over 80 watts of capacity require a minimum load of 35 watts for accurate lamp failure indications.

Accessories (Order Separately)

- 40G** Wire guard (Top mounted heads only)
PREMPW Matching remote head - single⁽⁵⁾
PREMPWD Matching remote head - twin⁽⁵⁾

(5) Supplied with round mounting plate.
Specify voltage and wattage when ordering.
Example: PREMPW0607.
See Remote Fixtures data sheet 0601888.



Housing

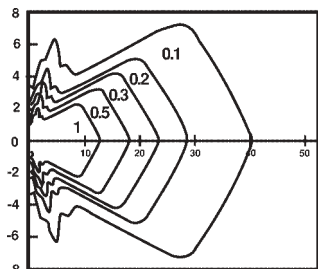
Constructed of NEMA 1 corrosion-resistant steel in ceiling white finish. Full length front cover provides easy access to battery and electronics. Units are supplied standard with two, top mounted fully directional PAR-36 sealed beam type lighting heads. Lighting head assemblies are re-locatable to the side of the unit if desired. An additional knockout is provided in the top of the housing for mounting a third lighting head if required. Knockouts are provided for right and left side entry of 1/2" conduit. A universal knockout pattern is provided in the cabinet back to allow unit mounting to electrical boxes up to 4" square. Keyhole slots are also provided on enclosure style 2 models to allow mounting directly to wall surfaces.

Light Source

LMP Series models are furnished standard with two 7.2 watt PAR-36 sealed beam type lamps. Fully adjustable injection molded lamphed assemblies will remain in place once they are aimed in the desired direction.

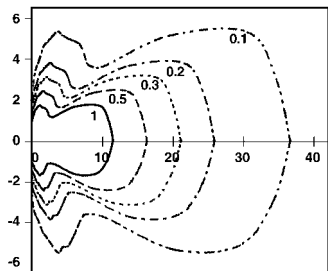
6 Volt, 7.2Watt SBT Lamp

Horizontal Distribution



12 Volt, 7.2Watt SBT Lamp

Horizontal Distribution



Optional Lamps

To order two nonstandard lamps on the fixture, suffix catalog number. See "Remote Fixtures" data sheet (0601888) for available lamps.

Example: **LMP54-0618**.

Battery

All models utilize maintenance-free lead-acid batteries. Batteries are completely sealed and the addition of water is never necessary.

Electronics

A solid-state charger is standard. Charger voltage is regulated to $\pm 1\%$ of nominal system voltage. The charger is current limited and protected against short circuit and reverse polarity

conditions. Transfer to emergency operation is completely automatic upon failure of utility AC voltage. A low voltage disconnect circuit prevents deep discharge damage to the unit battery during prolonged power outages. An AC lock-out prevents battery discharge before the unit is energized with AC power. Full battery recharge occurs in compliance with UL 924 specifications. A universal 120/277VAC, 60Hz input transformer, test switch and long life LED AC-On pilot light are all provided standard.

Power Consumption

20 watts (maximum)

Limited Warranty

Description	Warranty In Years		
	Unit	Battery	
		Full	Pro-Rata
LMP Series	3	1	5
With CVS option	5	2	4

Batteries must be placed in service or recharged within nine (9) months from factory shipment date. This warranty only applies when the product is used as intended. Any abuse or misuse contrary to normal installation or operation shall void this warranty.

Suggested Specifications

Self contained emergency lighting unit shall be Prescolite Life Safety Products model _____. Construction shall be of NEMA 1 corrosion-resistant steel in ceiling white finish. Full length front cover will provide easy access to battery and electronics. Knockouts will be provided for right and left side entry of 1/2" conduit. A universal knockout pattern shall be provided in the cabinet back to allow unit mounting to electrical boxes up to 4" square. Keyhole slots will also provided on enclosure style 2 models to allow mounting directly to wall surfaces. The unit shall supply the rated load for a minimum of 1 1/2 hours to not less than 87 1/2% of rated battery voltage. The unit shall be rated 120/277VAC, 60HZ and be listed by Underwriters Laboratories to Standard 924 (and Damp Location Listed). The emergency power source shall be a (6)(12)VDC maintenance-free lead-acid battery. Electronics shall include a solid state charger with regulated charge voltage and short circuit protection. A low voltage disconnect and AC lockout will also be included. A universal 120/277VAC, 60Hz input transformer, test switch and long life LED AC-On pilot light shall be standard. Units will be supplied standard with two, top mounted fully directional high impact thermoplastic lamphed assemblies. Illumination shall be provided by two PAR-36, 7.2 watt sealed beam type incandescent lamps. Lighting head assemblies shall be designed to be re-locatable to the side of the unit if required. An additional knockout will be provided in the top of the housing for mounting a third lighting head.

Product Selector Guide - Standard Models

Base Catalog Numbers	Enclosure Style	Electrical							
		Output Volts	Battery Type	Output Watts				Standard Lamp	Remote Capability
				1.5 Hours	2 Hours	3 Hours	4 Hours		
LMP2	1	6	Lead-Acid	14.4	—	—	—	7.2W	No
LMP16	1	6	Lead-Acid	16	—	—	—	7.2W	No
LMP33	1	6	Lead-Acid	33	25	17	13	7.2W	Yes
LMP40	1	6	Lead-Acid	40	31	21	16	7.2W	Yes
LMP66	2	6	Lead-Acid	66	51	35	27	7.2W	Yes
LMP80	2	6	Lead-Acid	80	62	43	33	7.2W	Yes
LMP130	2	6	Lead-Acid	130	101	70	54	7.2W	Yes
LMP40-12V	1	12	Lead-Acid	40	31	21	16	7.2W	Yes
LMP66-12V	2	12	Lead-Acid	66	51	35	27	7.2W	Yes
LMP110-12V	2	12	Lead-Acid	110	85	59	46	7.2W	Yes
LMP130-12V	2	12	Lead-Acid	130	101	70	54	7.2W	Yes

Product Selector Guide - Damp Location Models

Base Catalog Numbers	Enclosure Style	Electrical							
		Output Volts	Battery Type	Output Watts				Standard Lamp	Remote Capability
				1.5 Hours	2 Hours	3 Hours	4 Hours		
LMP28D	1	6	Lead-Acid	28	21	15	11	7.2W	Yes
LMP34D	1	6	Lead-Acid	34	26	18	14	7.2W	Yes
LMP56D	2	6	Lead-Acid	56	43	30	23	7.2W	Yes
LMP68D	2	6	Lead-Acid	68	53	36	28	7.2W	Yes
LMP112D	2	6	Lead-Acid	112	87	60	47	7.2W	Yes
LMP34D-12V	1	12	Lead-Acid	34	26	18	14	7.2W	Yes
LMP56D-12V	2	12	Lead-Acid	56	43	30	23	7.2W	Yes
LMP68D-12V	2	12	Lead-Acid	68	53	36	28	7.2W	Yes
LMP112D-12V	2	12	Lead-Acid	112	87	60	47	7.2W	Yes