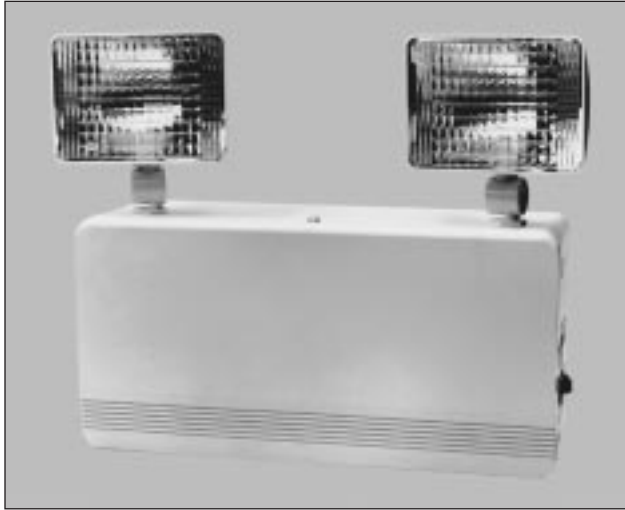


Type No. \_\_\_\_\_  
 Job Name \_\_\_\_\_  
 Catalog No. \_\_\_\_\_



Shown: **VP618W5962**



Listed to 924

### Housing

- UL 94 V-0, 5 VA impact resistant, white thermoplastic
- Universal J-box mounting pattern, keyhole slots or shelf mounting
- Available with a wide range of fully adjustable PAR 36 sealed beam tungsten or halogen; wedge base tungsten or halogen lamp heads
- Low profile push-to-test switch

### Electronics

- 120/277 VAC dual voltage input capability
- Lead calcium units utilize a solid-state, fully automatic, voltage regulated charger
- Nickel cadmium units utilize a solid-state, constant voltage charger
- Brownout protection activates lights when AC voltage drops 20% below nominal
- Labor saving AC lockout feature
- Low voltage disconnect switch (LVD) prevents deep battery discharge

### Power Consumption

120 VAC - 0.18 amps, 20 watts  
 277 VAC - 0.08 amps, 20 watts

### Application

- Commercial locations where a decorative, highly reliable emergency lighting unit is desired

### Warranty

Electronics: 3 years

Battery: 1 year full, 4 years pro-rata (lead calcium)

5 years full, 5 years pro-rata (nickel cadmium)

# Vectra Series

- **6 Volt, 14 - 50 Watts**  
**12 Volt, 25 - 50 Watts**
- **Maintenance Free, Sealed Lead Calcium or Nickel Cadmium Batteries**
- **General Duty Emergency Product w/Thermoplastic Housing**

### Battery

- Choice of maintenance free, sealed lead calcium or maintenance free, sealed nickel cadmium batteries
- Lead calcium battery has an expected service life of 5 years with an operating range of 65°F (19°C) to 85°F (30°C)\*
- Nickel cadmium battery has an expected service life of 10 years with an operating range of 20°F (-7°C) to 95°F (35°C)\*
- Nickel cadmium batteries are ideal for high ambient temperature areas

\* Increases or decreases in temperature will affect battery performance and/or capacity. Optimum battery performance realized at 77°F (25°C).

### Self-Diagnostics (optional)

- OmniTest Self-Diagnostics includes automatic and manual tests to ensure unit is operating properly, and assists user in meeting code requirements
- Verifies battery voltage and lamp continuity every 10 seconds
- Illuminates lamps and discharges battery for 3 minutes every 30 days. A manual test is available from 1 to 90 minutes.

### Code Compliance

- UL 924 listed
- NFPA 101
- NEC, BOCA and OSHA illumination standard

### Operation

DC Voltage	Unit	Suggested Lamp Head	Watts to 87 1/2% of Rated Voltage*			
			1 1/2 hrs.	2 hrs.	4 hrs.	8 hrs.
6	<b>VP618W</b>	J96	18.0	13.5	7.0	—
	<b>VP625W</b>	J96	25.0	19.0	9.5	—
	<b>VP636W</b>	J96	36.0	27.0	14.0	7.2
	<b>VP650W</b>	J96	50.0	37.5	19.0	10.0
	<b>VP6N14W</b>	J96	14.0	10.5	5.5	—
	<b>VP6N18W</b>	J96	18.0	13.5	7.0	—
	<b>VP6N25W</b>	J96	25.0	19.0	9.5	—
	<b>VP6N50W</b>	J96	50.0	37.5	19.0	10.0
	12	<b>VP1236W</b>	J912	36.0	27.0	14.0
<b>VP1250W</b>		J912	50.0	37.5	19.0	10.0
<b>VP12N25W</b>		J912	25.0	19.0	9.5	—
<b>VP12N50W</b>		J912	50.0	37.5	19.0	10.0

\* Per NEC Specifications

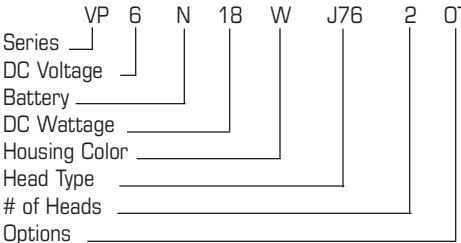
# Vectra Series

## Ordering Information

SERIES	DC VOLTAGE	BATTERY	DC WATTAGE	HOUSING COLOR	HEAD TYPE	# OF HEADS	OPTIONS <sup>1</sup>	ACCESSORIES (Ordered Separately)
VP = Vectra Series, Thermoplastic	6 = 6 Volt 12 = 12 Volt	Blank = Lead Calcium N = Nickel Cadmium	<b>Lead Calcium: 6 Volt</b> 18 = 18 watt 25 = 25 watt 36 = 36 watt 50 = 50 watt <b>12 Volt</b> 36 = 36 watt 50 = 50 watt <b>Nickel Cadmium: 6 Volt</b> 14 = 14 watt 18 = 18 watt 25 = 25 watt 50 = 50 watt <b>12 Volt</b> 25 = 25 watt 50 = 50 watt	W = White	Please refer to Lamp Head Selection Chart below.	2 = Two 1 = One Blank = No Heads	<b>A</b> = Ammeter <sup>2</sup> <b>ACF1</b> = 120 VAC Fuse <b>ACF2</b> = 277 VAC Fuse <b>ACP1</b> = 120 VAC Power Switch <b>ACP2</b> = 277 VAC Power Switch <b>DCP</b> = DC Power Switch <b>EX</b> = Special Input Transformer <sup>1</sup> (Specify voltage & frequency) <b>I</b> = Factory Installed Lamp Heads <b>LC</b> = Line Cord (6', 120 VAC field inst.) <b>OT</b> = OmniTest Self-Diagnostics <b>OTAL</b> = OmniTest w/ Alarm <b>OTTD</b> = OmniTest w/ Time Delay <sup>3</sup> <b>TD1</b> = 120 VAC Time Delay <sup>2</sup> <b>TD2</b> = 277 VAC Time Delay <sup>2</sup> <b>V</b> = Voltmeter <sup>2</sup>	<b>VRS</b> = Vandal Shield <b>WGS</b> = Wire Guard <b>MSSHELFW</b> = White Mounting Shelf

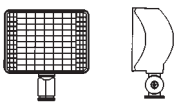
**NOTES:**  
1) Some option combinations may impact UL listing. Consult factory for specifics  
2) Not available with OT, OTAL or OTTD options.  
3) 15 minute delay.

## Ordering Example



## Lamp Head Selection

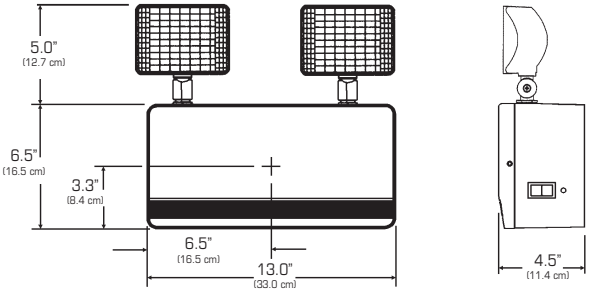
Lightguard's "J" head is the suggested head for the Vectra Thermoplastic Series. The wedge base head is constructed of high impact thermoplastic and is available in white to match the housing color. For additional lamp heads, please refer to the Accessories section of the Lightguard Specification Binder.



**"J" Head**  
Thermoplastic Wedge Base Rectangular Head

Type	Wattage	Order Code
<b>6 Volt</b> Tungsten	5.4	<b>White</b> <b>J66</b>
	7.2	<b>J76</b>
	9.0	<b>J96</b>
<b>12 Volt</b> Tungsten	9.0	<b>J912</b>
	12.5	<b>J1212</b>
	18.0	<b>J1812</b>

## Dimensions



## Suggested Specification

Furnish and install Lightguard's Vectra Series model \_\_\_\_\_. Upon failure or brownout of utility power, the units shall automatically transfer to battery power and maintain the required illumination for a period of 90 minutes. Upon restoration of utility power, the charger shall restore the battery to full charge per UL 924 standard requirements.

**CHARGER** - Sealed lead calcium battery units shall be equipped with a solid-state, voltage regulated charger. Nickel cadmium units shall be equipped with a solid-state constant current charger.

**BATTERY** - The battery shall be maintenance free, sealed lead calcium or maintenance free, sealed nickel cadmium.

**HOUSING** - The housing shall be UL 94 V-0, 5 VA high impact white thermoplastic.

**SELF-DIAGNOSTICS (optional)** - The unit shall include OmniTest self-diagnostics. OmniTest shall conduct the following automatic tests: battery voltage and lamp continuity every 10 seconds, a 3 minute battery discharge and lamp illumination test every 30 days, and a 30 minute battery discharge and lamp illumination test every 6 months. OmniTest shall also conduct the following manual tests: three minute, 30 minute and 90 minute battery discharge and lamp illumination tests and optional audible alarm test.

